



[Go to Product page](#)

Datasheet for ABIN6748166 **anti-PPP6C antibody (AA 90-139)**

1 Image

Overview

Quantity:	100 µL
Target:	PPP6C
Binding Specificity:	AA 90-139
Reactivity:	Human, Mouse, Rat, Cow, Zebrafish (Danio rerio), Chicken, Dog, Guinea Pig, Horse, Rabbit, Xenopus laevis, Bat, Monkey, Pig
Host:	Rabbit
Clonality:	Polyclonal
Conjugate:	This PPP6C antibody is un-conjugated
Application:	Western Blotting (WB)

Product Details

Immunogen:	Synthetic peptide located between aa90-139 of human PPP6C (O00743-2, NP_001116841). Percent identity by BLAST analysis: Human, Chimpanzee, Gibbon, Galago, Marmoset, Mouse, Rat, Elephant, Panda, Dog, Bovine, Bat, Rabbit, Horse, Pig, Opossum, Guinea pig, Turkey, Zebra finch, Chicken, Platypus, Xenopus, Salmon, Smelt, Stickleback, Zebrafish (100%), Slime mold, Rice, Nematode, Beetle, Grape, Arabidopsis (92%), Orangutan, Drosophila, Paramecium (85%). Type of Immunogen: Synthetic peptide
Specificity:	Human PPP6C
Predicted Reactivity:	Percent identity by BLAST analysis: Human, Dog, Bovine, Rabbit, Horse, Pig, Chicken, Xenopus, Zebrafish (100%).

Product Details

Purification: Immunoaffinity purified

Target Details

Target: PPP6C

Alternative Name: PPP6C / PP6 ([PPP6C Products](#))

Background: Name/Gene ID: PPP6C
Subfamily: Protein Phosphatase - Serine/Threonine other
Family: Protein Phosphatase

Synonyms: PPP6C, PP6, PP6C, PPP6, Protein phosphatase 6

Gene ID: 5537

NCBI Accession: [NP_001116841](#)

UniProt: [O00743](#)

Application Details

Application Notes: Optimal working dilution should be determined by the investigator.

Comment: Target Species of Antibody: Human

Restrictions: For Research Use only

Handling

Format: Lyophilized

Reconstitution: Reconstitute with 50 µL sterile ddH2O.

Concentration: Lot specific

Buffer: Lyophilized from PBS with 2 % sucrose

Handling Advice: Avoid repeat freeze-thaw cycles.

Storage: 4 °C, -20 °C

Storage Comment: Long term: -20°C, the use of 50% glycerol is recommended if storing aliquots in -20°C for long term use (up to 1 year)
Short term (less than 1 week): 4°C. Avoid freeze-thaw cycles.

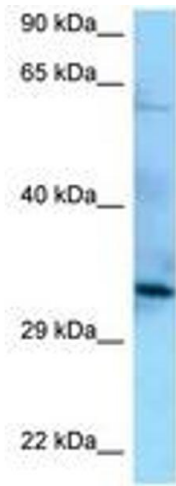


Image 1.