



[Go to Product page](#)

Datasheet for ABIN6748167
anti-SASS6 antibody (AA 402-451)

1 Image

Overview

| | |
|----------------------|--------------------------------------|
| Quantity: | 100 µL |
| Target: | SASS6 |
| Binding Specificity: | AA 402-451 |
| Reactivity: | Human, Mouse, Dog |
| Host: | Rabbit |
| Clonality: | Polyclonal |
| Conjugate: | This SASS6 antibody is un-conjugated |
| Application: | Western Blotting (WB) |

Product Details

| | |
|-----------------------|---|
| Immunogen: | Synthetic peptide located between aa402-451 of human SASS6 (Q495U0). Percent identity by BLAST analysis: Human, Chimpanzee (100%), Gorilla, Gibbon, Bovine, Rabbit, Horse, Guinea pig (92%), Bat, Opossum, Platypus (91%), Monkey, Marmoset, Panda, Dog (85%), Galago (84%), Lizard (83%), Mouse (78%). Type of Immunogen: Synthetic peptide |
| Specificity: | Human SASS6 |
| Predicted Reactivity: | Percent identity by BLAST analysis: Human (100%) Bovine, Rabbit, Horse, Guinea pig (92%) Dog (85%). |
| Purification: | Immunoaffinity purified |

Target Details

| | |
|-------------------|--|
| Target: | SASS6 |
| Alternative Name: | SAS6 / SASS6 (SASS6 Products) |
| Background: | Name/Gene ID: SASS6 Synonyms: SASS6, SAS6, HsSAS-6, SAS-6 |
| Gene ID: | 163786 |
| UniProt: | Q6UVJ0 |

Application Details

| | |
|--------------------|--|
| Application Notes: | Optimal working dilution should be determined by the investigator. |
| Comment: | Target Species of Antibody: Human |
| Restrictions: | For Research Use only |

Handling

| | |
|------------------|---|
| Format: | Lyophilized |
| Reconstitution: | Distilled water |
| Concentration: | Lot specific |
| Buffer: | Lyophilized from PBS with 2 % sucrose |
| Handling Advice: | Avoid repeat freeze-thaw cycles. |
| Storage: | 4 °C,-20 °C |
| Storage Comment: | Long term: -20°C, the use of 50% glycerol is recommended if storing aliquots in -20°C for long term use (up to 1 year) Short term (less than 1 week): 4°C. Avoid freeze-thaw cycles. |

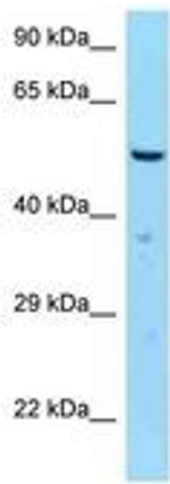


Image 1.