



Datasheet for ABIN6748176 anti-HLA-C antibody (AA 208-257)



[Go to Product page](#)

1 Image

Overview

Quantity:	100 µL
Target:	HLA-C
Binding Specificity:	AA 208-257
Reactivity:	Human, Dog
Host:	Rabbit
Clonality:	Polyclonal
Conjugate:	This HLA-C antibody is un-conjugated
Application:	Western Blotting (WB)

Product Details

Immunogen:	Synthetic peptide located between aa208-257 of human HLA-C (Q29960, NP_002108). Percent identity by BLAST analysis: Human, Chimpanzee, Gorilla, Orangutan, Dog (100%). Type of Immunogen: Synthetic peptide
Specificity:	Human HLA-C
Predicted Reactivity:	Percent identity by BLAST analysis:
Purification:	Immunoaffinity purified

Target Details

Target:	HLA-C
Alternative Name:	HLA-C (HLA-C Products)

Target Details

Background:	Name/Gene ID: HLA-C Synonyms: HLA-C, D6S204, HLA-JY3, HLC-C, PSORS1, HLAC
Gene ID:	3107
NCBI Accession:	NP_002108
Pathways:	Regulation of Leukocyte Mediated Immunity , Positive Regulation of Immune Effector Process , Human Leukocyte Antigen (HLA) in Adaptive Immune Response

Application Details

Application Notes:	Optimal working dilution should be determined by the investigator.
Comment:	Target Species of Antibody: Human
Restrictions:	For Research Use only

Handling

Format:	Lyophilized
Reconstitution:	Distilled water
Concentration:	Lot specific
Buffer:	Lyophilized from PBS with 2 % sucrose
Handling Advice:	Avoid repeat freeze-thaw cycles.
Storage:	4 °C,-20 °C
Storage Comment:	Long term: -20°C, the use of 50% glycerol is recommended if storing aliquots in -20°C for long term use (up to 1 year) Short term (less than 1 week): 4°C. Avoid freeze-thaw cycles.

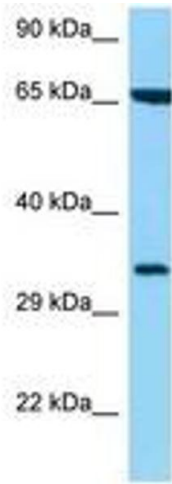


Image 1.