

Datasheet for ABIN6748192

anti-Macrophage Scavenger Receptor 1 antibody (AA 85-134)



[Go to Product page](#)

1 Image

Overview

Quantity:	100 µL
Target:	Macrophage Scavenger Receptor 1 (MSR1)
Binding Specificity:	AA 85-134
Reactivity:	Human, Horse
Host:	Rabbit
Clonality:	Polyclonal
Conjugate:	This Macrophage Scavenger Receptor 1 antibody is un-conjugated
Application:	Western Blotting (WB)

Product Details

Immunogen:	Synthetic peptide located between aa85-134 of human MSR1 (P21757, NP_619729). Percent identity by BLAST analysis: Human, Gibbon (100%), Gorilla, Marmoset, Panda, Dog (92%), Monkey (85%), Horse (84%). Type of Immunogen: Synthetic peptide
Specificity:	Human MSR1 / CD204
Predicted Reactivity:	Percent identity by BLAST analysis: Dog (92%) Horse (84%).
Purification:	Immunoaffinity purified

Target Details

Target:	Macrophage Scavenger Receptor 1 (MSR1)
---------	--

Target Details

Alternative Name:	MSR1 / CD204 (MSR1 Products)
Background:	Name/Gene ID: MSR1 Synonyms: MSR1, CD204 antigen, SCARA1, PhSR1, SR-A, CD204, PhSR2, SRA, MSR2
Gene ID:	4481
NCBI Accession:	NP_619729
UniProt:	P21757

Application Details

Application Notes:	Optimal working dilution should be determined by the investigator.
Comment:	Target Species of Antibody: Human
Restrictions:	For Research Use only

Handling

Format:	Lyophilized
Reconstitution:	Distilled water
Concentration:	Lot specific
Buffer:	Lyophilized from PBS with 2 % sucrose
Handling Advice:	Avoid repeat freeze-thaw cycles.
Storage:	4 °C,-20 °C
Storage Comment:	Long term: -20°C, the use of 50% glycerol is recommended if storing aliquots in -20°C for long term use (up to 1 year) Short term (less than 1 week): 4°C. Avoid freeze-thaw cycles.

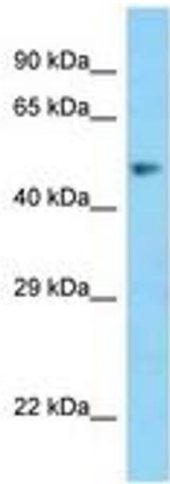


Image 1.