



[Go to Product page](#)

Datasheet for ABIN6748209
anti-C3orf22 antibody (AA 50-99)

1 Image

Overview

| | |
|----------------------|--|
| Quantity: | 100 µL |
| Target: | C3orf22 |
| Binding Specificity: | AA 50-99 |
| Reactivity: | Human, Rabbit |
| Host: | Rabbit |
| Clonality: | Polyclonal |
| Conjugate: | This C3orf22 antibody is un-conjugated |
| Application: | Western Blotting (WB) |

Product Details

| | |
|-----------------------|--|
| Immunogen: | Synthetic peptide located between aa50-99 of human C3orf22 (Q8N5N4, NP_689746). Percent identity by BLAST analysis: Human, Chimpanzee, Gorilla, Gibbon (100%), Marmoset, Rabbit (85%). Type of Immunogen: Synthetic peptide |
| Specificity: | Human C3orf22 |
| Predicted Reactivity: | Percent identity by BLAST analysis: Rabbit (85%). |
| Purification: | Immunoaffinity purified |

Target Details

| | |
|---------|---------|
| Target: | C3orf22 |
|---------|---------|

Target Details

Alternative Name: C3orf22 ([C3orf22 Products](#))

Background: Name/Gene ID: C3orf22

Synonyms: C3orf22

Gene ID: 152065

NCBI Accession: [NP_689746](#)

UniProt: [Q8N5N4](#)

Application Details

Application Notes: Optimal working dilution should be determined by the investigator.

Comment: Target Species of Antibody: Human

Restrictions: For Research Use only

Handling

Format: Lyophilized

Reconstitution: Distilled water

Concentration: Lot specific

Buffer: Lyophilized from PBS with 2 % sucrose

Handling Advice: Avoid repeat freeze-thaw cycles.

Storage: 4 °C,-20 °C

Storage Comment: Long term: -20°C, the use of 50% glycerol is recommended if storing aliquots in -20°C for long term use (up to 1 year)
Short term (less than 1 week): 4°C. Avoid freeze-thaw cycles.

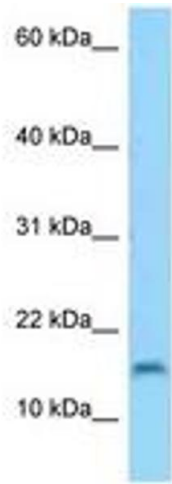


Image 1.