



[Go to Product page](#)

Datasheet for ABIN6748229

anti-CHMP2A antibody (N-Term)

1 Image

Overview

Quantity:	100 µL
Target:	CHMP2A
Binding Specificity:	N-Term
Reactivity:	Human, Rat, Mouse, Cow, Guinea Pig, Rabbit, Dog, Zebrafish (Danio rerio), Bat, Monkey, Chicken, Xenopus laevis
Host:	Rabbit
Clonality:	Polyclonal
Conjugate:	This CHMP2A antibody is un-conjugated
Application:	Western Blotting (WB)

Product Details

Immunogen:	Synthetic peptide from N-Terminus of human CHMP2A (O43633, NP_055268). Percent identity by BLAST analysis: Human, Chimpanzee, Gorilla, Gibbon, Monkey, Galago, Marmoset, Mouse, Rat, Elephant, Panda, Dog, Bovine, Bat, Rabbit, Guinea pig, Chicken, Xenopus, Trout, Seabass, Catfish, Salmon, Stickleback, Pufferfish, Zebrafish (100%), Sea squirt, Drosophila (92%), Slime mold (90%), Rice, Beetle, Grape, Arabidopsis (84%). Type of Immunogen: Synthetic peptide
Specificity:	Human CHMP2A
Predicted Reactivity:	Percent identity by BLAST analysis: Rat, Dog, Bovine (100%).
Purification:	Immunoaffinity purified

Target Details

Target:	CHMP2A
Alternative Name:	CHMP2A (CHMP2A Products)
Background:	Name/Gene ID: CHMP2A Synonyms: CHMP2A, BC2, BC-2, CHMP2, VPS2, VPS2 homolog A, VPS2A, Chromatin modifying protein 2A, Chromatin-modifying protein 2a, HVps2-1, Vps2-1
Gene ID:	27243
NCBI Accession:	NP_055268
UniProt:	O43633
Pathways:	SARS-CoV-2 Protein Interactome

Application Details

Application Notes:	Optimal working dilution should be determined by the investigator.
Comment:	Target Species of Antibody: Human
Restrictions:	For Research Use only

Handling

Format:	Lyophilized
Reconstitution:	Distilled water
Concentration:	Lot specific
Buffer:	Lyophilized from PBS with 2 % sucrose
Handling Advice:	Avoid repeat freeze-thaw cycles.
Storage:	4 °C,-20 °C
Storage Comment:	Long term: -20°C, the use of 50% glycerol is recommended if storing aliquots in -20°C for long term use (up to 1 year) Short term (less than 1 week): 4°C. Avoid freeze-thaw cycles.

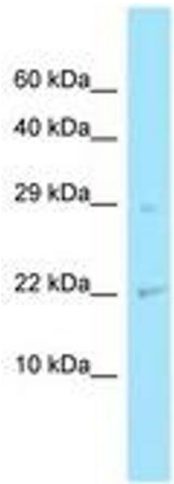


Image 1.