



[Go to Product page](#)

Datasheet for ABIN6748243
anti-IKKi/IKKe antibody (AA 158-207)

1 Image

Overview

Quantity:	100 µL
Target:	IKKi/IKKe (IKBKE)
Binding Specificity:	AA 158-207
Reactivity:	Human, Guinea Pig, Pig
Host:	Rabbit
Clonality:	Polyclonal
Conjugate:	This IKKi/IKKe antibody is un-conjugated
Application:	Western Blotting (WB)

Product Details

Immunogen:	Synthetic peptide located between aa158-207 of human IKBKE (Q3B754, NP_001180250). Percent identity by BLAST analysis: Human, Chimpanzee, Gorilla, Monkey, Panda, Guinea pig (100%), Gibbon, Galago, Marmoset, Elephant, Dog, Bovine, Rabbit, Horse (92%), Bat, Pig (85%). Type of Immunogen: Synthetic peptide
Specificity:	Human IKBKE
Predicted Reactivity:	Percent identity by BLAST analysis: Human, Guinea pig (100%) Dog, Bovine, Rabbit, Horse (92%) Pig (85%).
Purification:	Immunoaffinity purified

Target Details

Target:	IKKi/IKKe (IKBKE)
Alternative Name:	IKBKE / IKKI / IKKE (IKBKE Products)
Background:	Name/Gene ID: IKBKE Subfamily: IKAPPAB Family: Protein Kinase Synonyms: IKBKE, Ikb kinase epsilon, IKK-E, IKK-epsilon, Inducible I kappa-B kinase, KIAA0151, IKK-i, IKK-related kinase epsilon, I-kappa-B kinase epsilon, IKKE, IKKepsilon, IKKI, Inducible I kappaB kinase
Gene ID:	9641
NCBI Accession:	NP_001180250
UniProt:	Q14164
Pathways:	TLR Signaling , Activation of Innate immune Response , Hepatitis C , Toll-Like Receptors Cascades

Application Details

Application Notes:	Optimal working dilution should be determined by the investigator.
Comment:	Target Species of Antibody: Human
Restrictions:	For Research Use only

Handling

Format:	Lyophilized
Reconstitution:	Distilled water
Concentration:	Lot specific
Buffer:	Lyophilized from PBS with 2 % sucrose
Handling Advice:	Avoid repeat freeze-thaw cycles.
Storage:	4 °C, -20 °C
Storage Comment:	Long term: -20°C, the use of 50% glycerol is recommended if storing aliquots in -20°C for long term use (up to 1 year) Short term (less than 1 week): 4°C. Avoid freeze-thaw cycles.

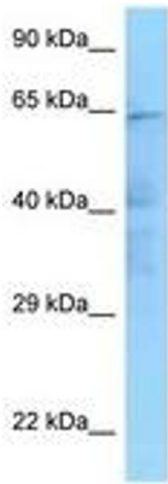


Image 1.