

## Datasheet for ABIN6748245 anti-UCP1 antibody (AA 77-126)



[Go to Product page](#)

### 1 Image

#### Overview

Quantity:	100 µL
Target:	UCP1
Binding Specificity:	AA 77-126
Reactivity:	Human
Host:	Rabbit
Clonality:	Polyclonal
Conjugate:	This UCP1 antibody is un-conjugated
Application:	Western Blotting (WB)

#### Product Details

Immunogen:	Synthetic peptide located between aa77-126 of human UCP1 (P25874, NP_068605). Percent identity by BLAST analysis: Human, Gorilla (100%), Monkey (92%), Gibbon (85%).  Type of Immunogen: Synthetic peptide
Specificity:	Human UCP1
Predicted Reactivity:	Percent identity by BLAST analysis: Human (100%).
Purification:	Immunoaffinity purified

#### Target Details

Target:	UCP1
Alternative Name:	UCP1 / UCP-1 ( <a href="#">UCP1 Products</a> )

## Target Details

---

Background:	Name/Gene ID: UCP1 Subfamily: Mitochondrial carrier Family: Transporter  Synonyms: UCP1, Thermogenin, SLC25A7, UCP-1, UCP 1
Gene ID:	7350
NCBI Accession:	<a href="#">NP_068605</a>
UniProt:	<a href="#">P25874</a>
Pathways:	<a href="#">Proton Transport</a> , <a href="#">Brown Fat Cell Differentiation</a>

## Application Details

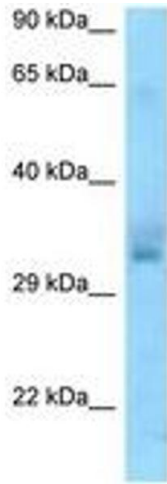
---

Application Notes:	Optimal working dilution should be determined by the investigator.
Comment:	Target Species of Antibody: Human
Restrictions:	For Research Use only

## Handling

---

Format:	Lyophilized
Reconstitution:	Distilled water
Concentration:	Lot specific
Buffer:	Lyophilized from PBS with 2 % sucrose
Handling Advice:	Avoid repeat freeze-thaw cycles.
Storage:	4 °C, -20 °C
Storage Comment:	Long term: -20°C, the use of 50% glycerol is recommended if storing aliquots in -20°C for long term use (up to 1 year) Short term (less than 1 week): 4°C. Avoid freeze-thaw cycles.



**Image 1.**