

Datasheet for ABIN6748254
anti-NR1H3 antibody (AA 356-405)



[Go to Product page](#)

1 Image

Overview

Quantity:	100 µL
Target:	NR1H3
Binding Specificity:	AA 356-405
Reactivity:	Human, Mouse, Rat, Cow, Dog, Goat, Horse, Rabbit, Pig, Guinea Pig, Monkey, Bat
Host:	Rabbit
Clonality:	Polyclonal
Conjugate:	This NR1H3 antibody is un-conjugated
Application:	Western Blotting (WB)

Product Details

Immunogen:	Synthetic peptide located between aa356-405 of mouse Nr1h3 (Q9Z0Y9, NP_038867). Percent identity by BLAST analysis: Human, Gorilla, Gibbon, Monkey, Galago, Marmoset, Mouse, Rat, Goat, Elephant, Panda, Dog, Bovine, Bat, Rabbit, Horse, Pig, Guinea pig (100%), Platypus (92%), Lizard (84%). Type of Immunogen: Synthetic peptide
Specificity:	Mouse NR1H3 / LXR Alpha
Predicted Reactivity:	Percent identity by BLAST analysis: Human, Mouse, Rat, Dog, Bovine, Goat, Pig, Guinea pig (100%).
Purification:	Immunoaffinity purified

Target Details

Target:	NR1H3
Alternative Name:	NR1H3 / LXR Alpha (NR1H3 Products)
Background:	Name/Gene ID: NR1H3 Subfamily: NR1 Thyroid hormone-like Family: NHR Synonyms: NR1H3, Liver X receptor alpha, LXRA, LXR-a, Oxysterols receptor LXR-alpha, LXR alpha, Lxralpha, RLD-1
Gene ID:	10062
NCBI Accession:	NP_038867
UniProt:	Q13133
Pathways:	Nuclear Receptor Transcription Pathway , Steroid Hormone Mediated Signaling Pathway , Nuclear Hormone Receptor Binding , Cellular Response to Molecule of Bacterial Origin , Hepatitis C

Application Details

Application Notes:	Optimal working dilution should be determined by the investigator.
Comment:	Target Species of Antibody: Mouse
Restrictions:	For Research Use only

Handling

Format:	Lyophilized
Reconstitution:	Distilled water
Concentration:	Lot specific
Buffer:	Lyophilized from PBS with 2 % sucrose
Handling Advice:	Avoid repeat freeze-thaw cycles.
Storage:	4 °C, -20 °C
Storage Comment:	Long term: -20°C, the use of 50% glycerol is recommended if storing aliquots in -20°C for long term use (up to 1 year) Short term (less than 1 week): 4°C. Avoid freeze-thaw cycles.

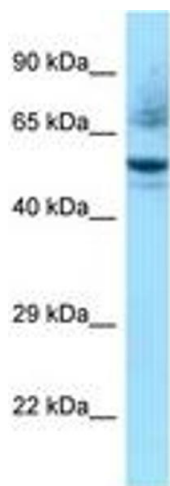


Image 1.