



[Go to Product page](#)

Datasheet for ABIN6748256
anti-PPP1R1A antibody (N-Term)

1 Image

Overview

Quantity:	100 µL
Target:	PPP1R1A
Binding Specificity:	N-Term
Reactivity:	Human, Rat, Mouse, Dog, Monkey, Cow, Xenopus laevis, Guinea Pig, Rabbit, Bat
Host:	Rabbit
Clonality:	Polyclonal
Conjugate:	This PPP1R1A antibody is un-conjugated
Application:	Western Blotting (WB)

Product Details

Immunogen:	Synthetic peptide from N-Terminus of mouse Ppp1r1a (Q9ERT9, NP_067366). Percent identity by BLAST analysis: Human, Gorilla, Monkey, Galago, Marmoset, Mouse, Rat, Panda, Dog, Bovine, Bat, Rabbit, Guinea pig, Xenopus (100%), Seabass (85%). Type of Immunogen: Synthetic peptide
Specificity:	Mouse PPP1R1A
Predicted Reactivity:	Percent identity by BLAST analysis: Human, Bovine, Guinea pig, Xenopus (100%).
Purification:	Immunoaffinity purified

Target Details

Target:	PPP1R1A
---------	---------

Target Details

Alternative Name:	PPP1R1A / IPP1 (PPP1R1A Products)
Background:	Name/Gene ID: PPP1R1A Synonyms: PPP1R1A, I-1, I1, Inhibitor-1, IPP1, IPP-1
Gene ID:	5502
NCBI Accession:	NP_067366
UniProt:	Q13522
Pathways:	Cellular Glucan Metabolic Process

Application Details

Application Notes:	Optimal working dilution should be determined by the investigator.
Comment:	Target Species of Antibody: Mouse
Restrictions:	For Research Use only

Handling

Format:	Lyophilized
Reconstitution:	Distilled water
Concentration:	Lot specific
Buffer:	Lyophilized from PBS with 2 % sucrose
Handling Advice:	Avoid repeat freeze-thaw cycles.
Storage:	4 °C, -20 °C
Storage Comment:	Long term: -20°C, the use of 50% glycerol is recommended if storing aliquots in -20°C for long term use (up to 1 year) Short term (less than 1 week): 4°C. Avoid freeze-thaw cycles.

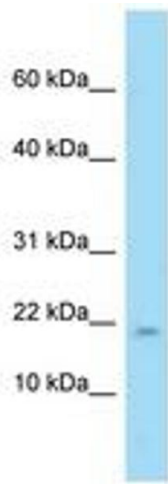


Image 1.