



[Go to Product page](#)

Datasheet for ABIN6748266
anti-ADAM29 antibody (AA 101-150)

1 Image

Overview

Quantity:	100 µL
Target:	ADAM29
Binding Specificity:	AA 101-150
Reactivity:	Human, Dog, Mouse, Rat, Monkey, Pig
Host:	Rabbit
Clonality:	Polyclonal
Conjugate:	This ADAM29 antibody is un-conjugated
Application:	Western Blotting (WB)

Product Details

Immunogen:	Synthetic peptide located between aa101-150 of mouse Adam29 (Q811Q4, NP_787953). Percent identity by BLAST analysis: Human, Gorilla, Gibbon, Monkey, Marmoset, Mouse, Rat (100%), Galago (92%), Guinea pig (91%), Dog (85%), Elephant, Bovine, Bat, Pig (84%). Type of Immunogen: Synthetic peptide
Specificity:	Mouse ADAM29
Predicted Reactivity:	Percent identity by BLAST analysis: Human (100%) Guinea pig (91%) Dog (85%) Pig (83%).
Purification:	Immunoaffinity purified

Target Details

Target:	ADAM29
---------	--------

Target Details

Alternative Name:	ADAM29 (ADAM29 Products)
Background:	Name/Gene ID: ADAM29 Subfamily: Metallopeptidase Non-catalytic Family: Protease Non Catalytic Synonyms: ADAM29, ADAM 29, Cancer/testis antigen 73, CT73, Svph1
Gene ID:	11086
NCBI Accession:	NP_787953
UniProt:	Q9UKF5

Application Details

Application Notes:	Optimal working dilution should be determined by the investigator.
Comment:	Target Species of Antibody: Mouse
Restrictions:	For Research Use only

Handling

Format:	Lyophilized
Reconstitution:	Distilled water
Concentration:	Lot specific
Buffer:	Lyophilized from PBS with 2 % sucrose
Handling Advice:	Avoid repeat freeze-thaw cycles.
Storage:	4 °C, -20 °C
Storage Comment:	Long term: -20°C, the use of 50% glycerol is recommended if storing aliquots in -20°C for long term use (up to 1 year) Short term (less than 1 week): 4°C. Avoid freeze-thaw cycles.

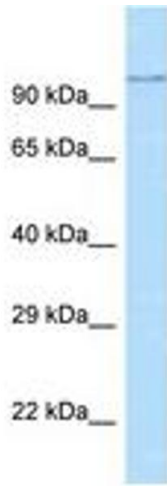


Image 1.