

Datasheet for ABIN6748274
anti-CNTD1 antibody (AA 201-250)



[Go to Product page](#)

1 Image

Overview

Quantity:	100 µL
Target:	CNTD1
Binding Specificity:	AA 201-250
Reactivity:	Human, Mouse, Rat, Cow, Dog, Horse, Rabbit, Bat, Hamster, Monkey
Host:	Rabbit
Clonality:	Polyclonal
Conjugate:	This CNTD1 antibody is un-conjugated
Application:	Western Blotting (WB)

Product Details

Immunogen:	Synthetic peptide located between aa201-250 of rat Cntd1 (NP_001184146). Percent identity by BLAST analysis: Human, Gorilla, Gibbon, Monkey, Galago, Marmoset, Mouse, Rat, Hamster, Elephant, Bovine, Bat, Rabbit, Horse (100%), Pig (92%), Platypus (90%), Dog (85%). Type of Immunogen: Synthetic peptide
Specificity:	Rat CNTD1 / CNTD
Predicted Reactivity:	Percent identity by BLAST analysis: Human, Mouse, Bovine (100%) Dog (85%).
Purification:	Immunoaffinity purified

Target Details

Target:	CNTD1
---------	-------

Target Details

Alternative Name: [CNTD1 \(CNTD1 Products\)](#)

Background: Name/Gene ID: CNTD1

Synonyms: CNTD1, CNTD

Gene ID: 124817

NCBI Accession: [NP_001184146](#)

UniProt: [Q8N815](#)

Application Details

Application Notes: Optimal working dilution should be determined by the investigator.

Comment: Target Species of Antibody: Rat

Restrictions: For Research Use only

Handling

Format: Lyophilized

Reconstitution: Distilled water

Concentration: Lot specific

Buffer: Lyophilized from PBS with 2 % sucrose

Handling Advice: Avoid repeat freeze-thaw cycles.

Storage: 4 °C, -20 °C

Storage Comment: Long term: -20°C, the use of 50% glycerol is recommended if storing aliquots in -20°C for long term use (up to 1 year)
Short term (less than 1 week): 4°C. Avoid freeze-thaw cycles.

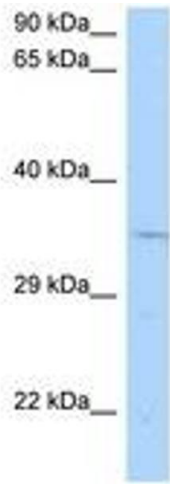


Image 1.