



[Go to Product page](#)

Datasheet for ABIN6748276  
**anti-C9orf9 antibody (AA 30-79)**

1 Image

Overview

Quantity:	100 µL
Target:	C9orf9 (C9ORF9)
Binding Specificity:	AA 30-79
Reactivity:	Human, Mouse, Rat, Cow, Guinea Pig, Monkey
Host:	Rabbit
Clonality:	Polyclonal
Conjugate:	This C9orf9 antibody is un-conjugated
Application:	Western Blotting (WB)

Product Details

Immunogen:	Synthetic peptide located between aa30-79 of rat Rsb66 (Q7TSB9, NP_859045). Percent identity by BLAST analysis: Human, Gorilla, Gibbon, Monkey, Galago, Marmoset, Mouse, Rat, Elephant, Bovine, Guinea pig (100%), Dog, Rabbit, Horse, Pig, Opossum, Platypus (92%).  Type of Immunogen: Synthetic peptide
Specificity:	Rat C9orf9
Predicted Reactivity:	Percent identity by BLAST analysis: Rat (100%).
Purification:	Immunoaffinity purified

Target Details

Target:	C9orf9 (C9ORF9)
---------	-----------------

## Target Details

---

Alternative Name:	C9orf9 ( <a href="#">C9ORF9 Products</a> )
Background:	Name/Gene ID: C9orf9  Synonyms: C9orf9, Rsb66 homolog
Gene ID:	11092
NCBI Accession:	<a href="#">NP_859045</a>
UniProt:	<a href="#">Q96E40</a>

## Application Details

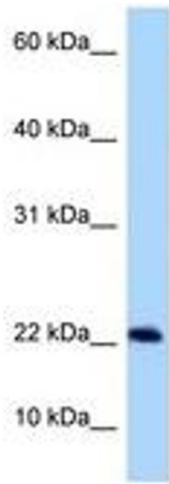
---

Application Notes:	Optimal working dilution should be determined by the investigator.
Comment:	Target Species of Antibody: Rat
Restrictions:	For Research Use only

## Handling

---

Format:	Lyophilized
Reconstitution:	Distilled water
Concentration:	Lot specific
Buffer:	Lyophilized from PBS with 2 % sucrose
Handling Advice:	Avoid repeat freeze-thaw cycles.
Storage:	4 °C,-20 °C
Storage Comment:	Long term: -20°C, the use of 50% glycerol is recommended if storing aliquots in -20°C for long term use (up to 1 year)  Short term (less than 1 week): 4°C. Avoid freeze-thaw cycles.



**Image 1.**