



[Go to Product page](#)

Datasheet for ABIN6748277  
**anti-AMD1 antibody (AA 242-291)**

1 Image

Overview

Quantity:	100 µL
Target:	AMD1
Binding Specificity:	AA 242-291
Reactivity:	Human, Mouse, Rat, Cow, Guinea Pig, Horse, Rabbit, Dog, Bat, Monkey, Hamster, Pig
Host:	Rabbit
Clonality:	Polyclonal
Conjugate:	This AMD1 antibody is un-conjugated
Application:	Western Blotting (WB)

Product Details

Immunogen:	Synthetic peptide located between aa242-291 of human AMD1 (P17707, NP_001625). Percent identity by BLAST analysis: Human, Chimpanzee, Gorilla, Gibbon, Marmoset, Mouse, Rat, Hamster, Elephant, Panda, Dog, Bovine, Bat, Rabbit, Horse, Pig, Guinea pig (100%), Turkey, Zebra finch, Chicken, Lizard, Salmon, Stickleback, Zebrafish (92%), Opossum, Platypus (85%), Galago (84%).  Type of Immunogen: Synthetic peptide
Specificity:	Human AMD1
Predicted Reactivity:	Percent identity by BLAST analysis: Human, Mouse, Rat, Dog, Rabbit, Pig (100%) Chicken, Zebrafish (92%).
Purification:	Immunoaffinity purified

## Target Details

---

Target:	AMD1
Alternative Name:	AMD / AMD1 ( <a href="#">AMD1 Products</a> )
Background:	Name/Gene ID: AMD1  Synonyms: AMD1, ADOMETDC, AMD, SAMDC
Gene ID:	262
NCBI Accession:	<a href="#">NP_001625</a>
UniProt:	<a href="#">P17707</a>
Pathways:	<a href="#">Ribonucleoside Biosynthetic Process</a>

## Application Details

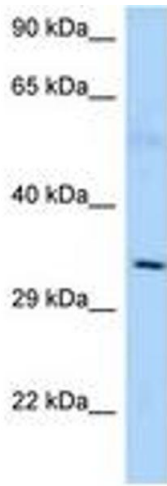
---

Application Notes:	Optimal working dilution should be determined by the investigator.
Comment:	Target Species of Antibody: Human
Restrictions:	For Research Use only

## Handling

---

Format:	Lyophilized
Reconstitution:	Distilled water
Concentration:	Lot specific
Buffer:	Lyophilized from PBS with 2 % sucrose
Handling Advice:	Avoid repeat freeze-thaw cycles.
Storage:	4 °C,-20 °C
Storage Comment:	Long term: -20°C, the use of 50% glycerol is recommended if storing aliquots in -20°C for long term use (up to 1 year)  Short term (less than 1 week): 4°C. Avoid freeze-thaw cycles.



**Image 1.**