

Datasheet for ABIN6748286
anti-Endonuclease V antibody (AA 138-187)



[Go to Product page](#)

1 Image

Overview

Quantity:	100 µL
Target:	Endonuclease V (ENDO V)
Binding Specificity:	AA 138-187
Reactivity:	Human, Cow, Mouse
Host:	Rabbit
Clonality:	Polyclonal
Conjugate:	This Endonuclease V antibody is un-conjugated
Application:	Western Blotting (WB)

Product Details

Immunogen:	Synthetic peptide located between aa138-187 of mouse Endov (Q8C9A2, NP_001158108). Percent identity by BLAST analysis: Human, Gorilla, Gibbon, Monkey, Mouse, Bovine (100%), Marmoset, Panda, Dog, Horse (92%), Galago, Elephant, Opossum (85%). Type of Immunogen: Synthetic peptide
Specificity:	Mouse A730011L01Rik
Predicted Reactivity:	Percent identity by BLAST analysis: Mouse (100%).
Purification:	Immunoaffinity purified

Target Details

Target:	Endonuclease V (ENDO V)
---------	-------------------------

Target Details

Alternative Name:	ENDO V (ENDO V Products)
Background:	Name/Gene ID: ENDO V Synonyms: ENDO V, Endonuclease V
Gene ID:	284131
NCBI Accession:	NP_001158108
UniProt:	Q8C9A2

Application Details

Application Notes:	Optimal working dilution should be determined by the investigator.
Comment:	Target Species of Antibody: Mouse
Restrictions:	For Research Use only

Handling

Format:	Lyophilized
Reconstitution:	Distilled water
Concentration:	Lot specific
Buffer:	Lyophilized from PBS with 2 % sucrose
Handling Advice:	Avoid repeat freeze-thaw cycles.
Storage:	4 °C,-20 °C
Storage Comment:	Long term: -20°C, the use of 50% glycerol is recommended if storing aliquots in -20°C for long term use (up to 1 year) Short term (less than 1 week): 4°C. Avoid freeze-thaw cycles.

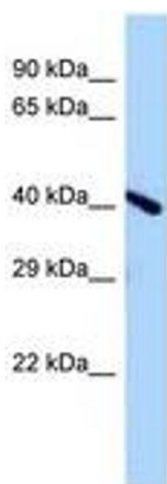


Image 1.