



Datasheet for ABIN6748288
anti-VPS36 antibody (AA 91-140)



[Go to Product page](#)

1 Image

Overview

Quantity:	100 µL
Target:	VPS36
Binding Specificity:	AA 91-140
Reactivity:	Human, Mouse, Rat, Cow, Dog, Guinea Pig, Horse, Bat, Monkey, Pig
Host:	Rabbit
Clonality:	Polyclonal
Conjugate:	This VPS36 antibody is un-conjugated
Application:	Western Blotting (WB)

Product Details

Immunogen:	Synthetic peptide located between aa91-140 of mouse Vps36 (Q91XD6, NP_081614). Percent identity by BLAST analysis: Human, Gorilla, Gibbon, Monkey, Galago, Marmoset, Mouse, Rat, Elephant, Dog, Bovine, Bat, Horse, Pig, Opossum, Guinea pig, Zebra finch, Platypus, Lizard (100%), Rabbit, Zebrafish (92%), Turkey, Chicken, Xenopus, Salmon, Stickleback (85%). Type of Immunogen: Synthetic peptide
Specificity:	Mouse VPS36
Predicted Reactivity:	Percent identity by BLAST analysis: Human, Mouse, Rat, Dog, Bovine, Horse, Pig, Guinea pig (100%) Rabbit, Zebrafish (92%) Chicken, Xenopus (85%).
Purification:	Immunoaffinity purified

Target Details

Target:	VPS36
Alternative Name:	VPS36 (VPS36 Products)
Background:	Name/Gene ID: VPS36 Synonyms: VPS36, CGI-145, ELL-associated protein, 45 kDa, ESCRT-II complex subunit VPS36, C13orf9, EAP45
Gene ID:	51028
NCBI Accession:	NP_081614
UniProt:	Q86VN1

Application Details

Application Notes:	Optimal working dilution should be determined by the investigator.
Comment:	Target Species of Antibody: Mouse
Restrictions:	For Research Use only

Handling

Format:	Lyophilized
Reconstitution:	Distilled water
Concentration:	Lot specific
Buffer:	Lyophilized from PBS with 2 % sucrose
Handling Advice:	Avoid repeat freeze-thaw cycles.
Storage:	4 °C,-20 °C
Storage Comment:	Long term: -20°C, the use of 50% glycerol is recommended if storing aliquots in -20°C for long term use (up to 1 year) Short term (less than 1 week): 4°C. Avoid freeze-thaw cycles.

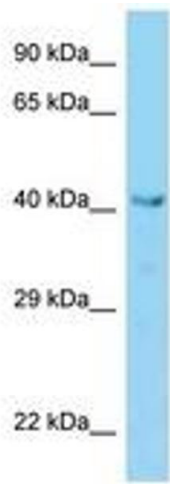


Image 1.