



[Go to Product page](#)

Datasheet for ABIN6748294

anti-ANKRD50 antibody (AA 1146-1195)

1 Image

Overview

Quantity:	100 µL
Target:	ANKRD50
Binding Specificity:	AA 1146-1195
Reactivity:	Human, Mouse, Rat, Cow, Dog, Horse, Rabbit, Guinea Pig, Chicken, Monkey, Bat
Host:	Rabbit
Clonality:	Polyclonal
Conjugate:	This ANKRD50 antibody is un-conjugated
Application:	Western Blotting (WB)

Product Details

Immunogen:	Synthetic peptide located between aa1146-1195 of rat Ankrd50 (NP_001178535). Percent identity by BLAST analysis: Human, Gorilla, Gibbon, Monkey, Galago, Marmoset, Mouse, Rat, Elephant, Panda, Dog, Bovine, Bat, Rabbit, Horse, Opossum, Guinea pig, Turkey, Zebra finch, Chicken, Lizard, Stickleback (100%), Xenopus (92%). Type of Immunogen: Synthetic peptide
Specificity:	Rat ANKRD50
Predicted Reactivity:	Percent identity by BLAST analysis: Human, Mouse, Dog, Bovine, Rabbit, Horse, Chicken (100%).
Purification:	Immunoaffinity purified

Target Details

Target:	ANKRD50
Alternative Name:	ANKRD50 (ANKRD50 Products)
Background:	Name/Gene ID: ANKRD50 Synonyms: ANKRD50, Ankyrin repeat domain 50, KIAA1223
Gene ID:	57182
NCBI Accession:	NP_001178535
UniProt:	Q9ULJ7

Application Details

Application Notes:	Optimal working dilution should be determined by the investigator.
Comment:	Target Species of Antibody: Rat
Restrictions:	For Research Use only

Handling

Format:	Lyophilized
Reconstitution:	Distilled water
Concentration:	Lot specific
Buffer:	Lyophilized from PBS with 2 % sucrose
Handling Advice:	Avoid repeat freeze-thaw cycles.
Storage:	4 °C, -20 °C
Storage Comment:	Long term: -20°C, the use of 50% glycerol is recommended if storing aliquots in -20°C for long term use (up to 1 year) Short term (less than 1 week): 4°C. Avoid freeze-thaw cycles.

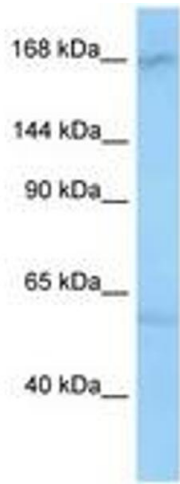


Image 1.