



[Go to Product page](#)

Datasheet for ABIN6748301  
**anti-VILL antibody (AA 176-225)**

1 Image

Overview

Quantity:	100 µL
Target:	VILL
Binding Specificity:	AA 176-225
Reactivity:	Human, Horse, Cow, Dog, Pig
Host:	Rabbit
Clonality:	Polyclonal
Conjugate:	This VILL antibody is un-conjugated
Application:	Western Blotting (WB)

Product Details

Immunogen:	Synthetic peptide located between aa176-225 of human VILL (NP_056957). Percent identity by BLAST analysis: Human (100%), Gorilla, Gibbon, Monkey, Marmoset, Mouse, Rat (92%), Lizard, Seabass (91%), Dog, Bovine, Horse, Pig, Guinea pig (85%).  Type of Immunogen: Synthetic peptide
Specificity:	Human VILL
Predicted Reactivity:	Percent identity by BLAST analysis: Human (100%) Mouse, Rat (92%) Dog, Bovine, Horse, Pig (85%).
Purification:	Immunoaffinity purified

## Target Details

---

Target:	VILL
Alternative Name:	Villin-Like / VILL ( <a href="#">VILL Products</a> )
Background:	Name/Gene ID: VILL  Synonyms: VILL, Villin-like protein, Villin-like
Gene ID:	50853
NCBI Accession:	<a href="#">NP_056957</a>
UniProt:	<a href="#">O15195</a>
Pathways:	<a href="#">Regulation of Actin Filament Polymerization</a>

## Application Details

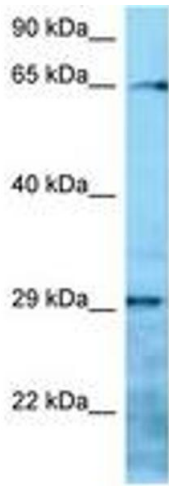
---

Application Notes:	Optimal working dilution should be determined by the investigator.
Comment:	Target Species of Antibody: Human
Restrictions:	For Research Use only

## Handling

---

Format:	Lyophilized
Reconstitution:	Distilled water
Concentration:	Lot specific
Buffer:	Lyophilized from PBS with 2 % sucrose
Handling Advice:	Avoid repeat freeze-thaw cycles.
Storage:	4 °C,-20 °C
Storage Comment:	Long term: -20°C, the use of 50% glycerol is recommended if storing aliquots in -20°C for long term use (up to 1 year) Short term (less than 1 week): 4°C. Avoid freeze-thaw cycles.



**Image 1.**