



[Go to Product page](#)

Datasheet for ABIN6748303
anti-CD151 antibody (AA 154-203)

1 Image

Overview

Quantity:	100 µL
Target:	CD151
Binding Specificity:	AA 154-203
Reactivity:	Human, Cow, Dog, Guinea Pig, Horse, Pig, Monkey
Host:	Rabbit
Clonality:	Polyclonal
Conjugate:	This CD151 antibody is un-conjugated
Application:	Western Blotting (WB)

Product Details

Immunogen:	Synthetic peptide located between aa154-203 of human CD151 (P48509, NP_620599). Percent identity by BLAST analysis: Human, Chimpanzee, Gorilla, Gibbon, Monkey, Marmoset, Panda, Dog, Horse, Pig (100%), Galago, Mouse, Rat (92%), Bovine, Guinea pig, Xenopus (85%). Type of Immunogen: Synthetic peptide
Specificity:	Human CD151
Predicted Reactivity:	Percent identity by BLAST analysis: Human, Dog, Pig (100%) Mouse, Rat (92%) Bovine, Guinea pig, Xenopus (85%).
Purification:	Immunoaffinity purified

Target Details

Target:	CD151
Alternative Name:	CD151 (CD151 Products)
Background:	Name/Gene ID: CD151 Family: Tetraspan Synonyms: CD151, CD151 antigen, gp27, Membrane glycoprotein SFA-1, PETA3, RAPH, SFA-1, TSPAN24, PETA-3, SFA1, MER2, Tetraspanin-24, Tspan-24
Gene ID:	977
NCBI Accession:	NP_620599
UniProt:	P48509

Application Details

Application Notes:	Optimal working dilution should be determined by the investigator.
Comment:	Target Species of Antibody: Human
Restrictions:	For Research Use only

Handling

Format:	Lyophilized
Reconstitution:	Distilled water
Concentration:	Lot specific
Buffer:	Lyophilized from PBS with 2 % sucrose
Handling Advice:	Avoid repeat freeze-thaw cycles.
Storage:	4 °C,-20 °C
Storage Comment:	Long term: -20°C, the use of 50% glycerol is recommended if storing aliquots in -20°C for long term use (up to 1 year) Short term (less than 1 week): 4°C. Avoid freeze-thaw cycles.

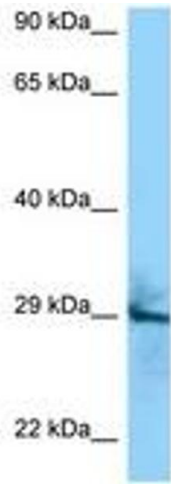


Image 1.