



[Go to Product page](#)

Datasheet for ABIN6748327  
**anti-NFKBIL1 antibody (C-Term)**

1 Image

Overview

Quantity:	100 µL
Target:	NFKBIL1
Binding Specificity:	C-Term
Reactivity:	Human, Mouse, Cow, Dog, Goat, Horse, Pig, Guinea Pig, Monkey
Host:	Rabbit
Clonality:	Polyclonal
Conjugate:	This NFKBIL1 antibody is un-conjugated
Application:	Western Blotting (WB)

Product Details

Immunogen:	Synthetic peptide from C-Terminus of mouse Nfkbil1 (O88995, NP_035039). Percent identity by BLAST analysis: Human, Chimpanzee, Gorilla, Orangutan, Gibbon, Monkey, Galago, Marmoset, Mouse, Goat, Elephant, Panda, Dog, Bovine, Horse, Pig, Opossum, Guinea pig, Platypus (100%), Rat, Bat (92%).  Type of Immunogen: Synthetic peptide
Specificity:	Mouse NFKBIL1
Predicted Reactivity:	Percent identity by BLAST analysis: Human, Mouse, Dog, Bovine, Goat, Guinea pig (100%).
Purification:	Immunoaffinity purified

## Target Details

---

Target:	NFKBIL1
Alternative Name:	NFKBIL1 ( <a href="#">NFKBIL1 Products</a> )
Background:	Name/Gene ID: NFKBIL1  Synonyms: NFKBIL1, I-kappa-B-like protein, NFKBIL, IkappaBL, IKBL
Gene ID:	4795
NCBI Accession:	<a href="#">NP_035039</a>
UniProt:	<a href="#">Q9UBC1</a>
Pathways:	<a href="#">Cellular Response to Molecule of Bacterial Origin, Maintenance of Protein Location</a>

## Application Details

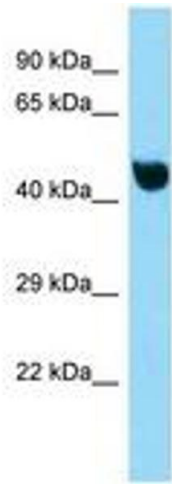
---

Application Notes:	Optimal working dilution should be determined by the investigator.
Comment:	Target Species of Antibody: Mouse
Restrictions:	For Research Use only

## Handling

---

Format:	Lyophilized
Reconstitution:	Distilled water
Concentration:	Lot specific
Buffer:	Lyophilized from PBS with 2 % sucrose
Handling Advice:	Avoid repeat freeze-thaw cycles.
Storage:	4 °C,-20 °C
Storage Comment:	Long term: -20°C, the use of 50% glycerol is recommended if storing aliquots in -20°C for long term use (up to 1 year)  Short term (less than 1 week): 4°C. Avoid freeze-thaw cycles.



**Image 1.**