

Datasheet for ABIN6748346 **anti-BCKDK antibody (N-Term)**



[Go to Product page](#)

1 Image

Overview

Quantity:	100 µL
Target:	BCKDK
Binding Specificity:	N-Term
Reactivity:	Human, Mouse, Rat, Cow, Dog, Guinea Pig, Rabbit, Monkey
Host:	Rabbit
Clonality:	Polyclonal
Conjugate:	This BCKDK antibody is un-conjugated
Application:	Western Blotting (WB)

Product Details

Immunogen:	Synthetic peptide from N-Terminus of rat Bckdk (Q00972, NP_062117). Percent identity by BLAST analysis: Human, Gorilla, Gibbon, Monkey, Galago, Mouse, Rat, Panda, Dog, Bovine, Rabbit, Guinea pig (100%), Bat, Pig (92%), Hamster, Elephant (85%). Type of Immunogen: Synthetic peptide
Specificity:	Rat BCKDK
Predicted Reactivity:	Percent identity by BLAST analysis: Human, Mouse, Dog (100%) Pig (92%).
Purification:	Immunoaffinity purified

Target Details

Target:	BCKDK
---------	-------

Target Details

Alternative Name:	BCKDK (BCKDK Products)
Background:	Name/Gene ID: BCKDK Subfamily: PDK/BCKDK Family: Protein Kinase Synonyms: BCKDK, BCKDKD, BCKDH kinase, BCKDHKIN, BCODC kinase, BCODH kinase, BCKA dehydrogenase kinase, BCKAD kinase, BCKD-kinase, BDK
Gene ID:	10295
NCBI Accession:	NP_062117
UniProt:	O14874
Pathways:	SARS-CoV-2 Protein Interactome

Application Details

Application Notes:	Optimal working dilution should be determined by the investigator.
Comment:	Target Species of Antibody: Rat
Restrictions:	For Research Use only

Handling

Format:	Lyophilized
Reconstitution:	Distilled water
Concentration:	Lot specific
Buffer:	Lyophilized from PBS with 2 % sucrose
Handling Advice:	Avoid repeat freeze-thaw cycles.
Storage:	4 °C, -20 °C
Storage Comment:	Long term: -20°C, the use of 50% glycerol is recommended if storing aliquots in -20°C for long term use (up to 1 year) Short term (less than 1 week): 4°C. Avoid freeze-thaw cycles.

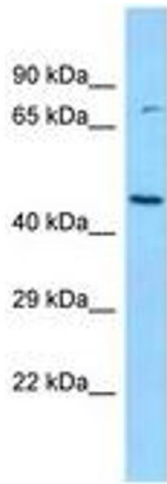


Image 1.