



[Go to Product page](#)

Datasheet for ABIN6748351
anti-IZUM04 antibody (C-Term)

1 Image

Overview

Quantity:	100 µL
Target:	IZUM04
Binding Specificity:	C-Term
Reactivity:	Human, Cow, Dog, Pig, Monkey
Host:	Rabbit
Clonality:	Polyclonal
Conjugate:	This IZUM04 antibody is un-conjugated
Application:	Western Blotting (WB)

Product Details

Immunogen:	Synthetic peptide from C-Terminus of human IZUM04 (Q1ZYL8, NP_001034935). Percent identity by BLAST analysis: Human, Gorilla, Gibbon, Monkey (100%), Elephant, Dog, Bovine, Horse, Pig (85%). Type of Immunogen: Synthetic peptide
Specificity:	Human IZUM04
Predicted Reactivity:	Percent identity by BLAST analysis: Human (100%) Dog, Bovine, Pig (85%).
Purification:	Immunoaffinity purified

Target Details

Target:	IZUM04
---------	--------

Target Details

Alternative Name: IZUM04 ([IZUM04 Products](#))

Background: Name/Gene ID: IZUM04

Synonyms: IZUM04, C19orf36, IZUMO family member 4, Sperm 22 kDa protein c113,
IMAGE:4215339

Gene ID: 113177

NCBI Accession: [NP_001034935](#)

UniProt: [Q1ZYL8](#)

Application Details

Application Notes: Optimal working dilution should be determined by the investigator.

Comment: Target Species of Antibody: Human

Restrictions: For Research Use only

Handling

Format: Lyophilized

Reconstitution: Distilled water

Concentration: Lot specific

Buffer: Lyophilized from PBS with 2 % sucrose

Handling Advice: Avoid repeat freeze-thaw cycles.

Storage: 4 °C, -20 °C

Storage Comment: Long term: -20°C, the use of 50% glycerol is recommended if storing aliquots in -20°C for long term use (up to 1 year)

Short term (less than 1 week): 4°C. Avoid freeze-thaw cycles.

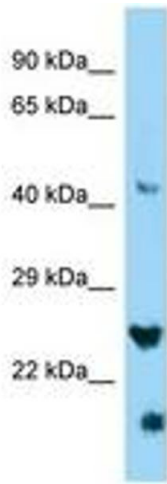


Image 1.