



[Go to Product page](#)

Datasheet for ABIN6748355
anti-BLOC1S2 antibody (AA 31-80)

1 Image

Overview

Quantity:	100 µL
Target:	BLOC1S2
Binding Specificity:	AA 31-80
Reactivity:	Human, Mouse, Rat, Dog, Horse, Pig, Rabbit, Cow, Monkey, Bat, Chicken, Xenopus laevis
Host:	Rabbit
Clonality:	Polyclonal
Conjugate:	This BLOC1S2 antibody is un-conjugated
Application:	Western Blotting (WB)

Product Details

Immunogen:	Synthetic peptide located between aa31-80 of mouse Bloc1s2 (Q9CWG9, NP_082883). Percent identity by BLAST analysis: Human, Monkey, Galago, Marmoset, Mouse, Rat, Elephant, Dog, Bovine, Bat, Rabbit, Horse, Pig, Opossum, Turkey, Zebra finch, Chicken, Xenopus (100%), Platypus (85%). Type of Immunogen: Synthetic peptide
Specificity:	Mouse BLOC1S2
Predicted Reactivity:	Percent identity by BLAST analysis: Human, Dog, Bovine, Horse, Chicken, Xenopus (100%).
Purification:	Immunoaffinity purified

Target Details

Target:	BLOC1S2
Alternative Name:	BLOC1S2 (BLOC1S2 Products)
Background:	Name/Gene ID: BLOC1S2 Synonyms: BLOC1S2, Centrosome protein oncogene, Centrosome-associated protein, CEAP, RP11-316M21.4, BLOC-1 subunit 2, BLOS2, Centrosomal 10 kDa protein
Gene ID:	282991
NCBI Accession:	NP_082883
UniProt:	Q6QNY1

Application Details

Application Notes:	Optimal working dilution should be determined by the investigator.
Comment:	Target Species of Antibody: Mouse
Restrictions:	For Research Use only

Handling

Format:	Lyophilized
Reconstitution:	Distilled water
Concentration:	Lot specific
Buffer:	Lyophilized from PBS with 2 % sucrose
Handling Advice:	Avoid repeat freeze-thaw cycles.
Storage:	4 °C, -20 °C
Storage Comment:	Long term: -20°C, the use of 50% glycerol is recommended if storing aliquots in -20°C for long term use (up to 1 year) Short term (less than 1 week): 4°C. Avoid freeze-thaw cycles.

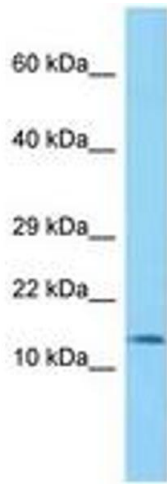


Image 1.