



[Go to Product page](#)

Datasheet for ABIN6748356  
**anti-SIMC1 antibody (AA 1236-1285)**

1 Image

Overview

Quantity:	100 µL
Target:	SIMC1
Binding Specificity:	AA 1236-1285
Reactivity:	Human, Mouse, Rat, Dog, Horse, Pig, Rabbit, Bat, Monkey
Host:	Rabbit
Clonality:	Polyclonal
Conjugate:	This SIMC1 antibody is un-conjugated
Application:	Western Blotting (WB)

Product Details

Immunogen:	Synthetic peptide located between aa1236-1285 of mouse Simc1 (NP_795961). Percent identity by BLAST analysis: Human, Gorilla, Gibbon, Monkey, Galago, Marmoset, Mouse, Rat, Elephant, Panda, Dog, Bat, Rabbit, Horse, Pig (100%), Opossum (90%), Bovine (84%).  Type of Immunogen: Synthetic peptide
Specificity:	Mouse 4732471D19Rik
Predicted Reactivity:	Percent identity by BLAST analysis: Mouse (100%).
Purification:	Immunoaffinity purified

Target Details

Target:	SIMC1
---------	-------

## Target Details

---

Alternative Name:	SIMC1 ( <a href="#">SIMC1 Products</a> )
Background:	Name/Gene ID: SIMC1  Synonyms: SIMC1, C5orf25, OOMA1
Gene ID:	375484
NCBI Accession:	<a href="#">NP_795961</a>

## Application Details

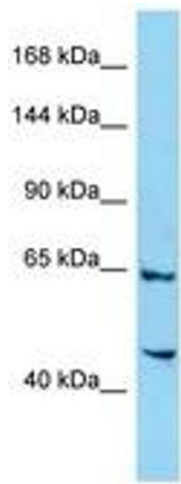
---

Application Notes:	Optimal working dilution should be determined by the investigator.
Comment:	Target Species of Antibody: Mouse
Restrictions:	For Research Use only

## Handling

---

Format:	Lyophilized
Reconstitution:	Distilled water
Concentration:	Lot specific
Buffer:	Lyophilized from PBS with 2 % sucrose
Handling Advice:	Avoid repeat freeze-thaw cycles.
Storage:	4 °C, -20 °C
Storage Comment:	Long term: -20°C, the use of 50% glycerol is recommended if storing aliquots in -20°C for long term use (up to 1 year) Short term (less than 1 week): 4°C. Avoid freeze-thaw cycles.



**Image 1.**