



[Go to Product page](#)

Datasheet for ABIN6748381
anti-ZBTB37 antibody (AA 251-300)

1 Image

Overview

Quantity:	100 µL
Target:	ZBTB37
Binding Specificity:	AA 251-300
Reactivity:	Human, Mouse, Rat, Guinea Pig, Horse, Rabbit, Cow, Dog, Monkey, Bat, Pig, Chicken
Host:	Rabbit
Clonality:	Polyclonal
Conjugate:	This ZBTB37 antibody is un-conjugated
Application:	Western Blotting (WB)

Product Details

Immunogen:	Synthetic peptide located between aa251-300 of mouse Zbtb37 (Q8C3U9, NP_775600). Percent identity by BLAST analysis: Human, Gorilla, Gibbon, Monkey, Galago, Marmoset, Mouse, Rat, Dog, Bovine, Bat, Elephant, Panda, Rabbit, Horse, Pig, Opossum, Guinea pig, Turkey, Chicken, Platypus, Lizard (100%), Zebra finch, Xenopus (92%). Type of Immunogen: Synthetic peptide
Specificity:	Mouse ZBTB37
Predicted Reactivity:	Percent identity by BLAST analysis: Human, Mouse, Rat, Dog, Bovine, Rabbit, Horse, Pig, Chicken (100%).
Purification:	Immunoaffinity purified

Target Details

Target:	ZBTB37
Alternative Name:	ZBTB37 (ZBTB37 Products)
Background:	Name/Gene ID: ZBTB37 Synonyms: ZBTB37, ZNF908
Gene ID:	84614
NCBI Accession:	NP_775600
UniProt:	Q5TC79

Application Details

Application Notes:	Optimal working dilution should be determined by the investigator.
Comment:	Target Species of Antibody: Mouse
Restrictions:	For Research Use only

Handling

Format:	Lyophilized
Reconstitution:	Distilled water
Concentration:	Lot specific
Buffer:	Lyophilized from PBS with 2 % sucrose
Handling Advice:	Avoid repeat freeze-thaw cycles.
Storage:	4 °C, -20 °C
Storage Comment:	Long term: -20°C, the use of 50% glycerol is recommended if storing aliquots in -20°C for long term use (up to 1 year) Short term (less than 1 week): 4°C. Avoid freeze-thaw cycles.

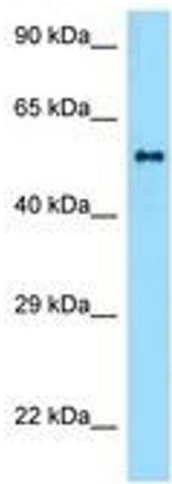


Image 1.