

Datasheet for ABIN6748394  
**anti-KLRK1 antibody (AA 121-170)**



[Go to Product page](#)

1 Image

## Overview

Quantity:	100 µL
Target:	KLRK1
Binding Specificity:	AA 121-170
Reactivity:	Human, Mouse, Rat, Cow, Monkey
Host:	Rabbit
Clonality:	Polyclonal
Conjugate:	This KLRK1 antibody is un-conjugated
Application:	Western Blotting (WB)

## Product Details

Immunogen:	Synthetic peptide located between aa121-170 of human KLRK1 (P26718, NP_031386). Percent identity by BLAST analysis: Human, Chimpanzee, Gorilla, Orangutan, Gibbon, Baboon, Monkey, Rat (100%), Mouse (78%).  Type of Immunogen: Synthetic peptide
Specificity:	Human KLRK1 / NKG2D
Predicted Reactivity:	Percent identity by BLAST analysis: Human (100%).
Purification:	Immunoaffinity purified

## Target Details

Target:	KLRK1
---------	-------

## Target Details

Alternative Name:	KLRK1 / CD314 / NKG2D ( <a href="#">KLRK1 Products</a> )
Background:	Name/Gene ID: KLRK1  Synonyms: KLRK1, D12S2489E, CD314 antigen, KLR, NK cell receptor D, NKG2D, NKG2-D, NKG2-D-activating NK receptor, CD314
Gene ID:	22914
NCBI Accession:	<a href="#">NP_031386</a>
UniProt:	<a href="#">P26718</a>
Pathways:	<a href="#">Activation of Innate immune Response</a> , <a href="#">Cellular Response to Molecule of Bacterial Origin</a> , <a href="#">Regulation of Leukocyte Mediated Immunity</a> , <a href="#">Positive Regulation of Immune Effector Process</a>

## Application Details

Application Notes:	Optimal working dilution should be determined by the investigator.
Comment:	Target Species of Antibody: Human
Restrictions:	For Research Use only

## Handling

Format:	Lyophilized
Reconstitution:	Distilled water
Concentration:	Lot specific
Buffer:	Lyophilized from PBS with 2 % sucrose
Handling Advice:	Avoid repeat freeze-thaw cycles.
Storage:	4 °C,-20 °C
Storage Comment:	Long term: -20°C, the use of 50% glycerol is recommended if storing aliquots in -20°C for long term use (up to 1 year)  Short term (less than 1 week): 4°C. Avoid freeze-thaw cycles.

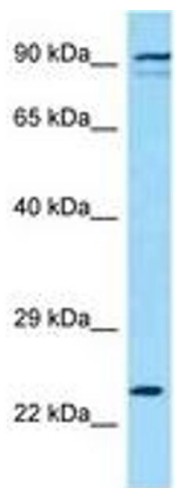


Image 1.