



[Go to Product page](#)

Datasheet for ABIN6748404

anti-MADCAM1 antibody (AA 235-284)

1 Image

Overview

Quantity:	100 µL
Target:	MADCAM1
Binding Specificity:	AA 235-284
Reactivity:	Human
Host:	Rabbit
Clonality:	Polyclonal
Conjugate:	This MADCAM1 antibody is un-conjugated
Application:	Western Blotting (WB)

Product Details

Immunogen:	Synthetic peptide located between aa235-284 of human MADCAM1 (Q13477, NP_570116). Percent identity by BLAST analysis: Human (100%), Gibbon (92%). Type of Immunogen: Synthetic peptide
Specificity:	Human MADCAM1 / MAdCAM-1
Predicted Reactivity:	Percent identity by BLAST analysis: Human (100%).
Purification:	Immunoaffinity purified

Target Details

Target:	MADCAM1
Alternative Name:	MADCAM1 / MAdCAM-1 (MADCAM1 Products)

Target Details

Background:	Name/Gene ID: MADCAM1
	Synonyms: MADCAM1, HMAAdCAM-1, MACAM1, MAdCAM-1
Gene ID:	8174
NCBI Accession:	NP_570116
UniProt:	Q13477

Application Details

Application Notes:	Optimal working dilution should be determined by the investigator.
Comment:	Target Species of Antibody: Human
Restrictions:	For Research Use only

Handling

Format:	Lyophilized
Reconstitution:	Distilled water
Concentration:	Lot specific
Buffer:	Lyophilized from PBS with 2 % sucrose
Handling Advice:	Avoid repeat freeze-thaw cycles.
Storage:	4 °C, -20 °C
Storage Comment:	Long term: -20°C, the use of 50% glycerol is recommended if storing aliquots in -20°C for long term use (up to 1 year) Short term (less than 1 week): 4°C. Avoid freeze-thaw cycles.

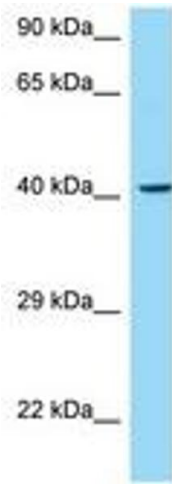


Image 1.