



[Go to Product page](#)

Datasheet for ABIN6748424

anti-ZNF280B antibody (N-Term)

1 Image

Overview

Quantity:	100 µL
Target:	ZNF280B
Binding Specificity:	N-Term
Reactivity:	Human, Cow, Pig, Monkey
Host:	Rabbit
Clonality:	Polyclonal
Conjugate:	This ZNF280B antibody is un-conjugated
Application:	Western Blotting (WB)

Product Details

Immunogen:	Synthetic peptide from N-Terminus of human ZNF280B (Q86YH2, NP_542942). Percent identity by BLAST analysis: Human, Chimpanzee, Gorilla, Gibbon, Monkey, Bovine, Pig (100%), Galago (92%). Type of Immunogen: Synthetic peptide
Specificity:	Human ZNF280B / SUHW2
Predicted Reactivity:	Percent identity by BLAST analysis: Human, Bovine, Pig (100%).
Purification:	Immunoaffinity purified

Target Details

Target:	ZNF280B
---------	---------

Target Details

Alternative Name:	ZNF280B (ZNF280B Products)
Background:	Name/Gene ID: ZNF280B Family: Zinc Finger Synonyms: ZNF280B, 5OY11.1, 5'OY11.1, SUHW2, Zinc finger protein 279, ZNF632, Zinc finger protein 632, D87009.C22.3, Zinc finger protein 280B, ZNF279
Gene ID:	140883
NCBI Accession:	NP_542942
UniProt:	Q86YH2

Application Details

Application Notes:	Optimal working dilution should be determined by the investigator.
Comment:	Target Species of Antibody: Human
Restrictions:	For Research Use only

Handling

Format:	Lyophilized
Reconstitution:	Distilled water
Concentration:	Lot specific
Buffer:	Lyophilized from PBS with 2 % sucrose
Handling Advice:	Avoid repeat freeze-thaw cycles.
Storage:	4 °C, -20 °C
Storage Comment:	Long term: -20°C, the use of 50% glycerol is recommended if storing aliquots in -20°C for long term use (up to 1 year) Short term (less than 1 week): 4°C. Avoid freeze-thaw cycles.

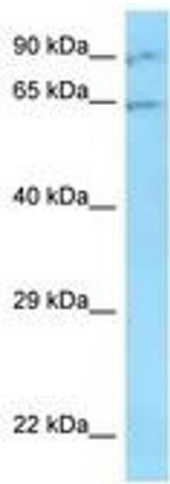


Image 1.