



Datasheet for ABIN6748431
anti-MFSD11 antibody (AA 357-406)



[Go to Product page](#)

1 Image

Overview

| | |
|----------------------|--|
| Quantity: | 100 µL |
| Target: | MFSD11 |
| Binding Specificity: | AA 357-406 |
| Reactivity: | Human, Cow, Dog, Guinea Pig, Horse, Mouse, Rabbit, Rat, Chicken, Monkey, Pig |
| Host: | Rabbit |
| Clonality: | Polyclonal |
| Conjugate: | This MFSD11 antibody is un-conjugated |
| Application: | Western Blotting (WB) |

Product Details

| | |
|-----------------------|---|
| Immunogen: | Synthetic peptide located between aa357-406 of mouse Mfsd11 (Q8BJ51, NP_848735). Percent identity by BLAST analysis: Human, Gorilla, Orangutan, Gibbon, Monkey, Galago, Marmoset, Mouse, Rat, Elephant, Panda, Dog, Bovine, Horse, Pig, Opossum, Guinea pig, Turkey, Zebra finch, Chicken, Platypus, Lizard (100%), Bat (92%), Rabbit (85%). Type of Immunogen: Synthetic peptide |
| Specificity: | Mouse MFSD11 |
| Predicted Reactivity: | Percent identity by BLAST analysis: Chicken (100%) Rabbit (85%). |
| Purification: | Immunoaffinity purified |

Target Details

Target: MFSD11

Alternative Name: MFSD11 / ET ([MFSD11 Products](#))

Background: Name/Gene ID: MFSD11

Synonyms: MFSD11, Splicing factor sc35, UNC93-like protein MFSD11, Protein ET, ET

Gene ID: 79157

NCBI Accession: [NP_848735](#)

UniProt: [O43934](#)

Application Details

Application Notes: Optimal working dilution should be determined by the investigator.

Comment: Target Species of Antibody: Mouse

Restrictions: For Research Use only

Handling

Format: Lyophilized

Reconstitution: Distilled water

Concentration: Lot specific

Buffer: Lyophilized from PBS with 2 % sucrose

Handling Advice: Avoid repeat freeze-thaw cycles.

Storage: 4 °C, -20 °C

Storage Comment: Long term: -20°C, the use of 50% glycerol is recommended if storing aliquots in -20°C for long term use (up to 1 year)

Short term (less than 1 week): 4°C. Avoid freeze-thaw cycles.

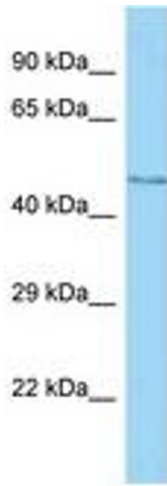


Image 1.