



Datasheet for ABIN6748437
anti-LAMTOR4 antibody (N-Term)



[Go to Product page](#)

1 Image

Overview

Quantity:	100 µL
Target:	LAMTOR4
Binding Specificity:	N-Term
Reactivity:	Mouse, Human, Rat, Cow, Dog, Guinea Pig, Rabbit, Hamster, Monkey, Pig
Host:	Rabbit
Clonality:	Polyclonal
Conjugate:	This LAMTOR4 antibody is un-conjugated
Application:	Western Blotting (WB)

Product Details

Immunogen:	Synthetic peptide from N-Terminus of mouse Lamtor4 (Q8CF66, NP_001074577). Percent identity by BLAST analysis: Human, Chimpanzee, Gorilla, Orangutan, Marmoset, Mouse, Rat, Hamster, Dog, Bovine, Rabbit, Pig, Opossum, Guinea pig, Platypus (100%), Galago, Bat, Zebrafish (92%), Xenopus, Stickleback (85%). Type of Immunogen: Synthetic peptide
Specificity:	Mouse 0910001L09Rik
Predicted Reactivity:	Percent identity by BLAST analysis:
Purification:	Immunoaffinity purified

Target Details

Target:	LAMTOR4
Alternative Name:	LAMTOR4 (LAMTOR4 Products)
Background:	Name/Gene ID: LAMTOR4 Synonyms: LAMTOR4, C7orf59
Gene ID:	389541
NCBI Accession:	NP_001074577
UniProt:	Q8CF66

Application Details

Application Notes:	Optimal working dilution should be determined by the investigator.
Comment:	Target Species of Antibody: Mouse
Restrictions:	For Research Use only

Handling

Format:	Lyophilized
Reconstitution:	Distilled water
Concentration:	Lot specific
Buffer:	Lyophilized from PBS with 2 % sucrose
Handling Advice:	Avoid repeat freeze-thaw cycles.
Storage:	4 °C, -20 °C
Storage Comment:	Long term: -20°C, the use of 50% glycerol is recommended if storing aliquots in -20°C for long term use (up to 1 year) Short term (less than 1 week): 4°C. Avoid freeze-thaw cycles.

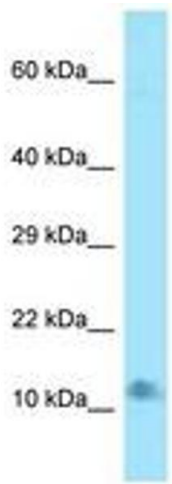


Image 1.