



[Go to Product page](#)

Datasheet for ABIN6748440
anti-PPP4R4 antibody (AA 670-719)

1 Image

Overview

Quantity:	100 µL
Target:	PPP4R4
Binding Specificity:	AA 670-719
Reactivity:	Mouse, Human, Rabbit, Cow, Dog, Guinea Pig, Horse, Monkey, Xenopus laevis
Host:	Rabbit
Clonality:	Polyclonal
Conjugate:	This PPP4R4 antibody is un-conjugated
Application:	Western Blotting (WB)

Product Details

Immunogen:	Synthetic peptide located between aa670-719 of mouse Ppp4r4 (Q8C0Y0, NP_083256). Percent identity by BLAST analysis: Human, Gorilla, Gibbon, Monkey, Galago, Marmoset, Mouse, Elephant, Dog, Bovine, Rabbit, Horse, Opossum, Guinea pig, Xenopus (100%), Chicken (90%), Turkey, Zebra finch, Lizard (85%), Platypus (84%). Type of Immunogen: Synthetic peptide
Specificity:	Mouse PPP4R4
Predicted Reactivity:	Percent identity by BLAST analysis: Mouse, Dog, Bovine, Rabbit, Horse, Guinea pig (100%), Chicken (85%).
Purification:	Immunoaffinity purified

Target Details

Target:	PPP4R4
Alternative Name:	PPP4R4 (PPP4R4 Products)
Background:	Name/Gene ID: PPP4R4 Synonyms: PPP4R4, PP4R4, KIAA1622
Gene ID:	57718
NCBI Accession:	NP_083256
UniProt:	Q6NUP7

Application Details

Application Notes:	Optimal working dilution should be determined by the investigator.
Comment:	Target Species of Antibody: Mouse
Restrictions:	For Research Use only

Handling

Format:	Lyophilized
Reconstitution:	Distilled water
Concentration:	Lot specific
Buffer:	Lyophilized from PBS with 2 % sucrose
Handling Advice:	Avoid repeat freeze-thaw cycles.
Storage:	4 °C, -20 °C
Storage Comment:	Long term: -20°C, the use of 50% glycerol is recommended if storing aliquots in -20°C for long term use (up to 1 year) Short term (less than 1 week): 4°C. Avoid freeze-thaw cycles.

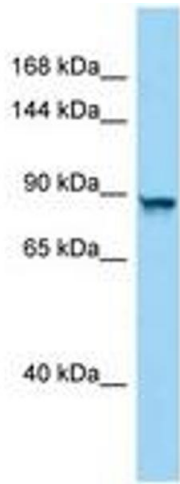


Image 1.