



Datasheet for ABIN6748451
anti-TMEM192 antibody (AA 60-109)



[Go to Product page](#)

1 Image

Overview

Quantity:	100 µL
Target:	TMEM192
Binding Specificity:	AA 60-109
Reactivity:	Human, Mouse, Rat, Guinea Pig, Rabbit, Monkey
Host:	Rabbit
Clonality:	Polyclonal
Conjugate:	This TMEM192 antibody is un-conjugated
Application:	Western Blotting (WB)

Product Details

Immunogen:	Synthetic peptide located between aa60-109 of human TMEM192 (Q8IY95, NP_001093859). Percent identity by BLAST analysis: Human, Chimpanzee, Orangutan, Monkey, Marmoset, Rabbit, Opossum, Platypus (100%), Gibbon, Galago, Elephant, Dog, Bovine, Bat, Horse, Pig, Turkey, Zebra finch, Chicken (92%), Mouse, Rat (84%). Type of Immunogen: Synthetic peptide
Specificity:	Human TMEM192
Predicted Reactivity:	Percent identity by BLAST analysis: Rabbit (100%) Dog, Bovine, Horse, Pig, Chicken (92%) Mouse, Rat (84%).
Purification:	Immunoaffinity purified

Target Details

Target:	TMEM192
Alternative Name:	TMEM192 (TMEM192 Products)
Background:	Name/Gene ID: TMEM192 Synonyms: TMEM192, Transmembrane protein 192
Gene ID:	201931
NCBI Accession:	NP_001093859
UniProt:	Q8IY95

Application Details

Application Notes:	Optimal working dilution should be determined by the investigator.
Comment:	Target Species of Antibody: Human
Restrictions:	For Research Use only

Handling

Format:	Lyophilized
Reconstitution:	Distilled water
Concentration:	Lot specific
Buffer:	Lyophilized from PBS with 2 % sucrose
Handling Advice:	Avoid repeat freeze-thaw cycles.
Storage:	4 °C, -20 °C
Storage Comment:	Long term: -20°C, the use of 50% glycerol is recommended if storing aliquots in -20°C for long term use (up to 1 year) Short term (less than 1 week): 4°C. Avoid freeze-thaw cycles.

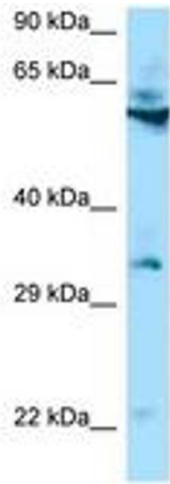


Image 1.