



[Go to Product page](#)

Datasheet for ABIN6748452
anti-ZFYVE21 antibody (AA 99-148)

1 Image

Overview

Quantity:	100 µL
Target:	ZFYVE21
Binding Specificity:	AA 99-148
Reactivity:	Human, Rat, Zebrafish (Danio rerio), Horse, Rabbit, Pig
Host:	Rabbit
Clonality:	Polyclonal
Conjugate:	This ZFYVE21 antibody is un-conjugated
Application:	Western Blotting (WB)

Product Details

Immunogen:	Synthetic peptide located between aa99-148 of human ZFYVE21 (Q9BQ24, NP_076976). Percent identity by BLAST analysis: Human, Gorilla (100%), Gibbon, Monkey, Dog (92%), Marmoset, Mouse, Rat, Horse, Pig, Guinea pig (85%), Bovine (84%). Type of Immunogen: Synthetic peptide
Specificity:	Human ZFYVE21
Predicted Reactivity:	Percent identity by BLAST analysis: Dog (92%) Rat, Horse, Pig (85%).
Purification:	Immunoaffinity purified

Target Details

Target:	ZFYVE21
---------	---------

Target Details

Alternative Name:	ZFYVE21 (ZFYVE21 Products)
Background:	Name/Gene ID: ZFYVE21 Synonyms: ZFYVE21, ZF21, FYVE domain containing 21
Gene ID:	79038
NCBI Accession:	NP_076976
UniProt:	Q9BQ24

Application Details

Application Notes:	Optimal working dilution should be determined by the investigator.
Comment:	Target Species of Antibody: Human
Restrictions:	For Research Use only

Handling

Format:	Lyophilized
Reconstitution:	Distilled water
Concentration:	Lot specific
Buffer:	Lyophilized from PBS with 2 % sucrose
Handling Advice:	Avoid repeat freeze-thaw cycles.
Storage:	4 °C,-20 °C
Storage Comment:	Long term: -20°C, the use of 50% glycerol is recommended if storing aliquots in -20°C for long term use (up to 1 year) Short term (less than 1 week): 4°C. Avoid freeze-thaw cycles.

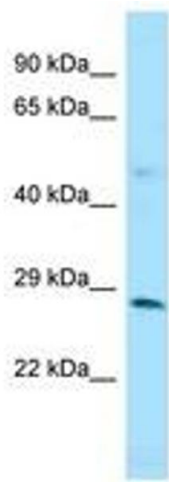


Image 1.