

Datasheet for ABIN6748464
anti-CKB antibody (AA 284-333)



[Go to Product page](#)

1 Image

Overview

Quantity:	100 µL
Target:	CKB
Binding Specificity:	AA 284-333
Reactivity:	Human, Mouse, Rat, Dog, Rabbit, Zebrafish (Danio rerio), Cow, Horse, Guinea Pig, Monkey, Chicken, Pig, Xenopus laevis, Bat, Hamster
Host:	Rabbit
Clonality:	Polyclonal
Conjugate:	This CKB antibody is un-conjugated
Application:	Western Blotting (WB)

Product Details

Immunogen:	Synthetic peptide located between aa284-333 of human CKB (P06732, NP_001814). Percent identity by BLAST analysis: Human, Chimpanzee, Gorilla, Orangutan, Gibbon, Monkey, Galago, Marmoset, Mouse, Rat, Hamster, Elephant, Panda, Dog, Bovine, Bat, Rabbit, Horse, Pig, Opossum, Guinea pig, Turkey, Zebra finch, Chicken, Platypus, Xenopus, Trout, Catfish, Salmon, Smelt, Stickleback, Pike, Pufferfish, Zebrafish (100%). Type of Immunogen: Synthetic peptide
Specificity:	Human CKB
Predicted Reactivity:	Percent identity by BLAST analysis: Human, Dog, Chicken, Xenopus, Zebrafish (100%).
Purification:	Immunoaffinity purified

Target Details

Target:	CKB
Alternative Name:	CKB / Creatine Kinase BB (CKB Products)
Background:	Name/Gene ID: CKB Synonyms: CKB, CKBB, Creatine kinase-B, Creatine kinase, b chain, B-CK, Creatine kinase B chain, Creatine kinase B-type, Creatine kinase, brain
Gene ID:	1152
NCBI Accession:	NP_001814
UniProt:	P12277

Application Details

Application Notes:	Optimal working dilution should be determined by the investigator.
Comment:	Target Species of Antibody: Human
Restrictions:	For Research Use only

Handling

Format:	Lyophilized
Reconstitution:	Distilled water
Concentration:	Lot specific
Buffer:	Lyophilized from PBS with 2 % sucrose
Handling Advice:	Avoid repeat freeze-thaw cycles.
Storage:	4 °C,-20 °C
Storage Comment:	Long term: -20°C, the use of 50% glycerol is recommended if storing aliquots in -20°C for long term use (up to 1 year) Short term (less than 1 week): 4°C. Avoid freeze-thaw cycles.

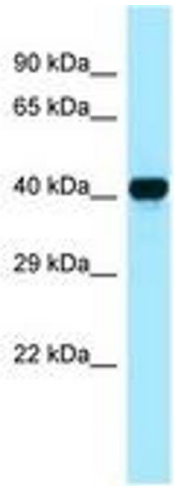


Image 1.