

Datasheet for ABIN6748483  
**anti-UTF1 antibody (AA 251-300)**[Go to Product page](#)

## 2 Images

## Overview

Quantity:	100 µL
Target:	UTF1
Binding Specificity:	AA 251-300
Reactivity:	Human, Mouse, Rat, Guinea Pig
Host:	Rabbit
Clonality:	Polyclonal
Conjugate:	This UTF1 antibody is un-conjugated
Application:	Western Blotting (WB), Immunohistochemistry (Paraffin-embedded Sections) (IHC (p)), Immunohistochemistry (IHC)

## Product Details

Brand:	IHC-plus™
Immunogen:	Synthetic peptide located between aa251-300 of human UTF1 (Q5T230, NP_003568). Percent identity by BLAST analysis: Human, Gorilla, Monkey (100%), Galago, Marmoset, Bovine, Panda, Pig (92%), Mouse, Rat, Bat (85%).  Type of Immunogen: Synthetic peptide
Specificity:	Human UTF1
Predicted Reactivity:	Percent identity by BLAST analysis: Human (100%) Bovine, Pig (92%) Mouse, Rat (85%).
Purification:	Immunoaffinity purified

## Target Details

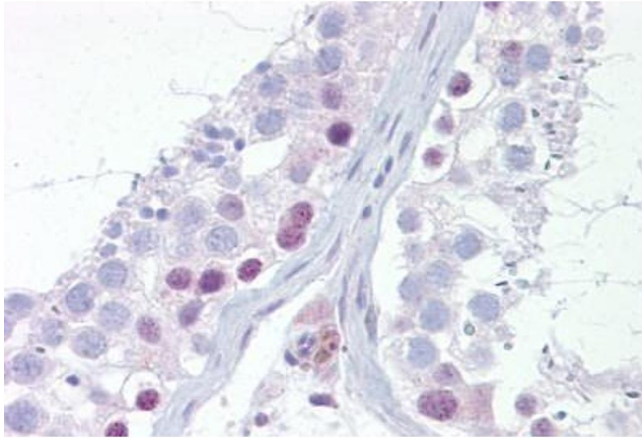
Target:	UTF1
Alternative Name:	UTF1 ( <a href="#">UTF1 Products</a> )
Background:	Name/Gene ID: UTF1  Synonyms: UTF1
Gene ID:	8433
NCBI Accession:	<a href="#">NP_003568</a>
UniProt:	<a href="#">Q5T230</a>

## Application Details

Application Notes:	Approved: IHC, IHC-P (5 µg/mL), WB (0.2 - 1 µg/mL)  Usage: Western Blot: Suggested dilution at 1 µg/mL in 5 % skim milk / PBS buffer, and HRP conjugated anti-Rabbit IgG should be diluted in 1: 50,000 - 100,000 as secondary antibody.
Comment:	Target Species of Antibody: Human
Restrictions:	For Research Use only

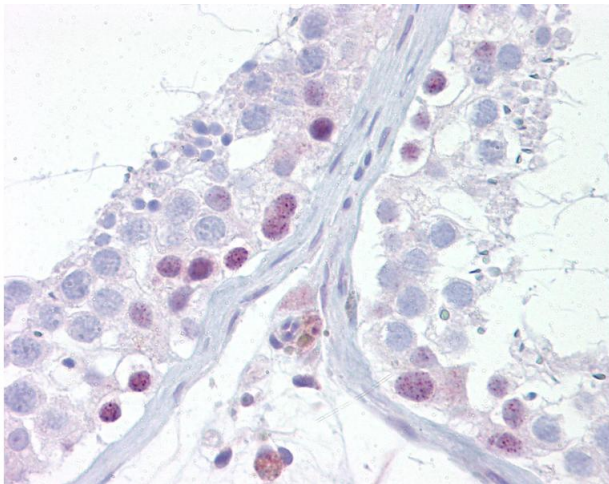
## Handling

Format:	Lyophilized
Reconstitution:	Distilled water
Concentration:	Lot specific
Buffer:	Lyophilized from PBS with 2 % sucrose
Handling Advice:	Avoid repeat freeze-thaw cycles.
Storage:	4 °C, -20 °C
Storage Comment:	Long term: -20°C, the use of 50% glycerol is recommended if storing aliquots in -20°C for long term use (up to 1 year)  Short term (less than 1 week): 4°C. Avoid freeze-thaw cycles.



#### Immunohistochemistry

**Image 1.** Anti-UTF1 antibody IHC staining of human testis. Immunohistochemistry of formalin-fixed, paraffin-embedded tissue after heat-induced antigen retrieval. Antibody ABIN959039 concentration 5 ug/ml.



#### Immunohistochemistry

**Image 2.** Anti-UTF1 antibody IHC of human testis. Immunohistochemistry of formalin-fixed, paraffin-embedded tissue after heat-induced antigen retrieval. Antibody concentration 5 ug/ml. This image was taken for the unconjugated form of this product. Other form ...