

Datasheet for ABIN6748491
anti-PLP1 antibody (AA 36-85)

2 Images

[Go to Product page](#)

Overview

Quantity:	100 µL
Target:	PLP1
Binding Specificity:	AA 36-85
Reactivity:	Human, Rat, Mouse, Cow, Dog, Horse, Rabbit, Guinea Pig, Bat, Monkey, Pig
Host:	Rabbit
Clonality:	Polyclonal
Conjugate:	This PLP1 antibody is un-conjugated
Application:	Western Blotting (WB), Immunohistochemistry (IHC), Immunohistochemistry (Paraffin-embedded Sections) (IHC (p))

Product Details

Brand:	IHC-plus™
Immunogen:	Synthetic peptide located between aa36-85 of human PLP1 (P60201, NP_000524). Percent identity by BLAST analysis: Human, Chimpanzee, Gorilla, Orangutan, Gibbon, Monkey, Galago, Marmoset, Mouse, Rat, Elephant, Dog, Bovine, Bat, Rabbit, Horse, Pig, Opossum, Guinea pig (100%), Turkey, Zebra finch, Chicken, Platypus, Xenopus (92%), Salmon (83%). Type of Immunogen: Synthetic peptide
Specificity:	Human PLP1
Predicted Reactivity:	Percent identity by BLAST analysis: Human, Mouse, Rat, Dog, Guinea pig (100%) Chicken (92%).
Purification:	Immunoaffinity purified

Target Details

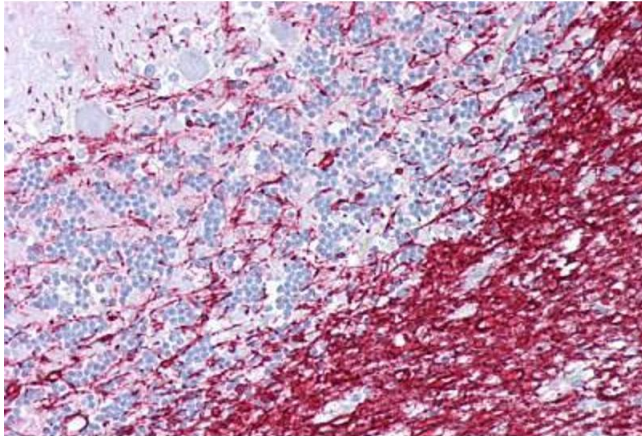
Target:	PLP1
Alternative Name:	PLP1 / Myelin PLP (PLP1 Products)
Background:	Name/Gene ID: PLP1 Synonyms: PLP1, HLD1, PMD, Myelin proteolipid protein, Proteolipid protein 1, SPG2, Lipophilin, MMPL, PLP, PLP/DM20
Gene ID:	5354
NCBI Accession:	NP_000524

Application Details

Application Notes:	Approved: IHC, IHC-P (5 µg/mL), WB (0.2 - 1 µg/mL) Usage: Western Blot: Suggested dilution at 1 µg/mL in 5 % skim milk / PBS buffer, and HRP conjugated anti-Rabbit IgG should be diluted in 1: 50,000 - 100,000 as secondary antibody.
Comment:	Target Species of Antibody: Human
Restrictions:	For Research Use only

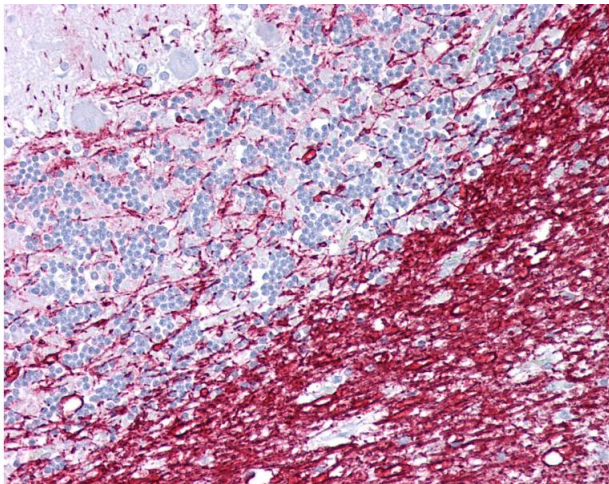
Handling

Format:	Lyophilized
Reconstitution:	Distilled water
Concentration:	Lot specific
Buffer:	Lyophilized from PBS with 2 % sucrose
Handling Advice:	Avoid freeze-thaw cycles.
Storage:	4 °C, -20 °C
Storage Comment:	Long term: -20°C, the use of 50% glycerol is recommended if storing aliquots in -20°C for long term use (up to 1 year) Short term (less than 1 week): 4°C. Avoid freeze-thaw cycles.



Immunohistochemistry

Image 1. Anti-PLP1 antibody IHC staining of human brain, cerebellum. Immunohistochemistry of formalin-fixed, paraffin-embedded tissue after heat-induced antigen retrieval. Antibody ABIN959011 concentration 5 ug/ml.



Immunohistochemistry

Image 2. Anti-PLP1 antibody IHC of human brain, cerebellum. Immunohistochemistry of formalin-fixed, paraffin-embedded tissue after heat-induced antigen retrieval. Antibody concentration 5 ug/ml. This image was taken for the unconjugated form of this product. ...