

Datasheet for ABIN6748494
anti-KIF2A antibody (AA 72-121)[Go to Product page](#)

2 Images

Overview

Quantity:	100 µL
Target:	KIF2A
Binding Specificity:	AA 72-121
Reactivity:	Human, Mouse, Cow, Horse
Host:	Rabbit
Clonality:	Polyclonal
Conjugate:	This KIF2A antibody is un-conjugated
Application:	Western Blotting (WB), Immunohistochemistry (IHC), Immunohistochemistry (Paraffin-embedded Sections) (IHC (p))

Product Details

Brand:	IHC-plus™
Immunogen:	Synthetic peptide located between aa72-121 of human KIF2A (O00139, NP_004511). Percent identity by BLAST analysis: Human (100%), Gorilla, Orangutan, Gibbon, Monkey, Rat, Elephant, Panda, Dog, Bat, Rabbit, Guinea pig (92%), Galago, Marmoset, Bovine, Horse (85%), Mouse (78%). Type of Immunogen: Synthetic peptide
Specificity:	Human KIF2A
Predicted Reactivity:	Percent identity by BLAST analysis: Human (100%) Rat, Dog, Rabbit, Guinea pig (92%) Bovine, Horse (85%).

Product Details

Purification: Immunoaffinity purified

Target Details

Target: KIF2A

Alternative Name: KIF2A / Kinesin-2 ([KIF2A Products](#))

Background: Name/Gene ID: KIF2A

Synonyms: KIF2A, KNS2, KIF2, Kinesin heavy chain member 2A, Kinesin heavy chain member 2, Kinesin, heavy chain, 2, Kinesin-like protein KIF2A, Kinesin-2

Gene ID: 3796

NCBI Accession: [NP_004511](#)

UniProt: [O00139](#)

Pathways: [Microtubule Dynamics](#), [Ribonucleoprotein Complex Subunit Organization](#)

Application Details

Application Notes: Approved: IHC, IHC-P (5 µg/mL), WB (0.2 - 1 µg/mL)

Usage: Western Blot: Suggested dilution at 1 µg/mL in 5 % skim milk / PBS buffer, and HRP conjugated anti-Rabbit IgG should be diluted in 1: 50,000 - 100,000 as secondary antibody.

Comment: Target Species of Antibody: Human

Restrictions: For Research Use only

Handling

Format: Lyophilized

Reconstitution: Distilled water

Concentration: Lot specific

Buffer: Lyophilized from PBS with 2 % sucrose

Handling Advice: Avoid freeze-thaw cycles.

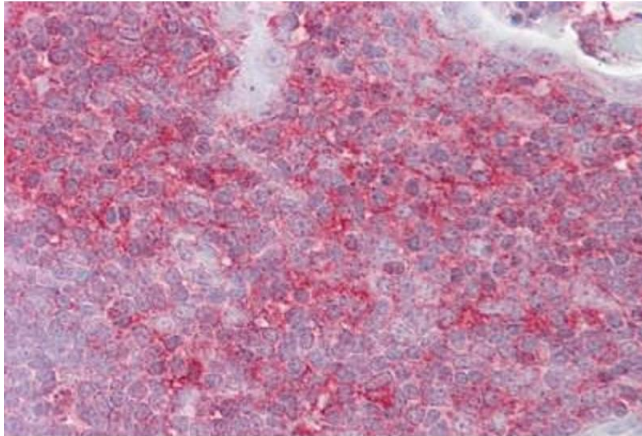
Storage: 4 °C, -20 °C

Storage Comment: Long term: -20°C, the use of 50% glycerol is recommended if storing aliquots in -20°C for long

term use (up to 1 year)

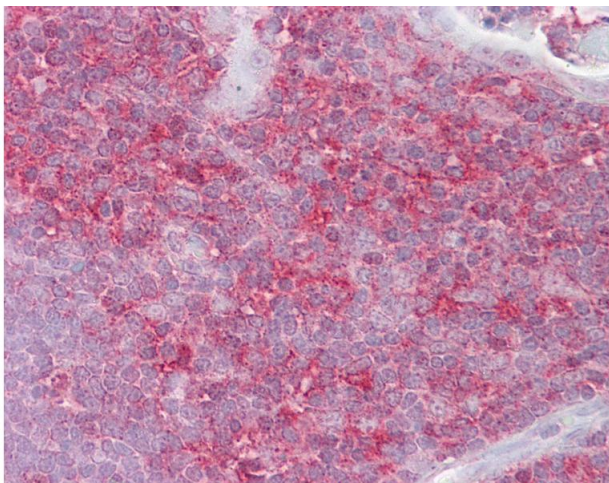
Short term (less than 1 week): 4°C. Avoid freeze-thaw cycles.

Images



Immunohistochemistry

Image 1. Anti-KIF2A antibody IHC staining of human thymus. Immunohistochemistry of formalin-fixed, paraffin-embedded tissue after heat-induced antigen retrieval. Antibody ABIN958997 concentration 5 ug/ml.



Immunohistochemistry

Image 2. Anti-KIF2A antibody IHC of human thymus. Immunohistochemistry of formalin-fixed, paraffin-embedded tissue after heat-induced antigen retrieval. Antibody concentration 5 ug/ml. This image was taken for the unconjugated form of this product. Other for ...