

Datasheet for ABIN6748495  
**anti-EGR3 antibody (AA 143-192)**

## 2 Images

[Go to Product page](#)

## Overview

Quantity:	100 µL
Target:	EGR3
Binding Specificity:	AA 143-192
Reactivity:	Human, Mouse, Rat, Horse, Cow, Dog, Guinea Pig, Pig, Monkey, Bat
Host:	Rabbit
Clonality:	Polyclonal
Conjugate:	This EGR3 antibody is un-conjugated
Application:	Western Blotting (WB), Immunohistochemistry (IHC), Immunohistochemistry (Paraffin-embedded Sections) (IHC (p))

## Product Details

Brand:	IHC-plus™
Immunogen:	Synthetic peptide located between aa143-192 of human EGR3 (Q06889, NP_004421). Percent identity by BLAST analysis: Human, Chimpanzee, Gorilla, Orangutan, Gibbon, Baboon, Monkey, Galago, Marmoset, Tamarin, Mouse, Rat, Elephant, Panda, Dog, Bovine, Bat, Horse, Pig, Opossum, Guinea pig, Platypus (100%).  Type of Immunogen: Synthetic peptide
Specificity:	Human EGR3
Predicted Reactivity:	Percent identity by BLAST analysis: Human, Mouse, Rat, Dog, Bovine, Horse, Pig, Guinea pig (100%).

## Product Details

Purification: Immunoaffinity purified

## Target Details

Target: EGR3

Alternative Name: EGR3 ([EGR3 Products](#))

Background: Name/Gene ID: EGR3

Synonyms: EGR3, Early growth response 3, EGR-3, PILOT, Zinc finger protein pilot

Gene ID: 1960

NCBI Accession: [NP\\_004421](#)

UniProt: [Q06889](#)

## Application Details

Application Notes: Approved: IHC, IHC-P (5 µg/mL), WB (0.2 - 1 µg/mL)

Usage: Western Blot: Suggested dilution at 1 µg/mL in 5 % skim milk / PBS buffer, and HRP conjugated anti-Rabbit IgG should be diluted in 1: 50,000 - 100,000 as secondary antibody.

Comment: Target Species of Antibody: Human

Restrictions: For Research Use only

## Handling

Format: Lyophilized

Reconstitution: Distilled water

Concentration: Lot specific

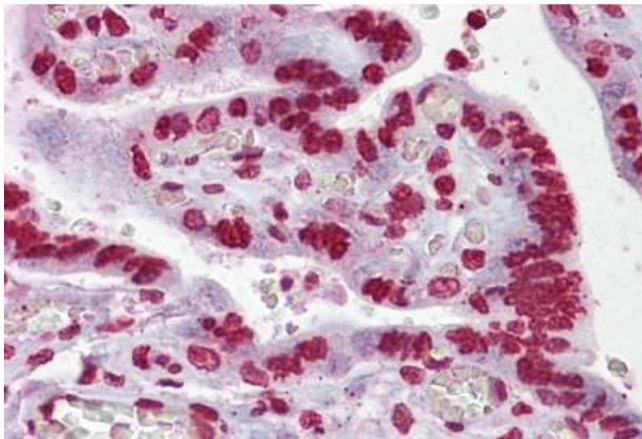
Buffer: Lyophilized from PBS with 2 % sucrose

Handling Advice: Avoid freeze-thaw cycles.

Storage: 4 °C, -20 °C

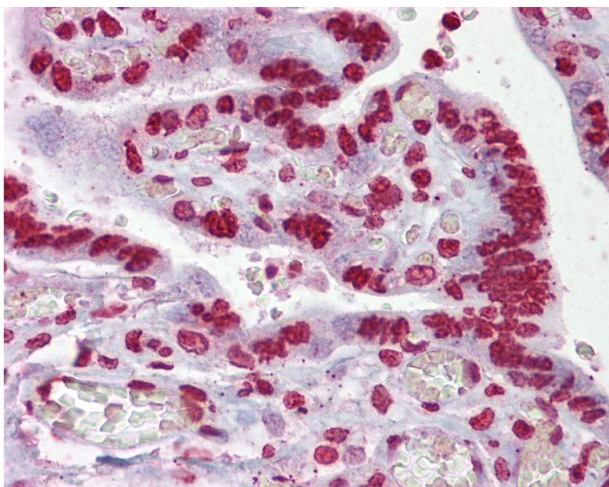
Storage Comment: Long term: -20°C, the use of 50% glycerol is recommended if storing aliquots in -20°C for long term use (up to 1 year)

Short term (less than 1 week): 4°C. Avoid freeze-thaw cycles.



#### Immunohistochemistry

**Image 1.** Anti-EGR3 antibody IHC staining of human placenta. Immunohistochemistry of formalin-fixed, paraffin-embedded tissue after heat-induced antigen retrieval. Antibody ABIN958973 concentration 5 ug/ml.



#### Immunohistochemistry

**Image 2.** Anti-EGR3 antibody IHC of human placenta. Immunohistochemistry of formalin-fixed, paraffin-embedded tissue after heat-induced antigen retrieval. Antibody concentration 5 ug/ml. This image was taken for the unconjugated form of this product. Other fo ...