

Datasheet for ABIN6748498

anti-Aspartate beta Hydroxylase antibody (AA 107-156)[Go to Product page](#)**2** Images

Overview

Quantity:	100 µL
Target:	Aspartate beta Hydroxylase (ASPH)
Binding Specificity:	AA 107-156
Reactivity:	Human, Mouse, Monkey
Host:	Rabbit
Clonality:	Polyclonal
Conjugate:	This Aspartate beta Hydroxylase antibody is un-conjugated
Application:	Western Blotting (WB), Immunohistochemistry (IHC), Immunohistochemistry (Paraffin-embedded Sections) (IHC (p))

Product Details

Brand:	IHC-plus™
Immunogen:	Synthetic peptide located between aa107-156 of human ASPH (Q9H291, NP_115857). Percent identity by BLAST analysis: Human, Gorilla, Orangutan, Gibbon, Monkey, Marmoset (100%), Mouse (85%). Type of Immunogen: Synthetic peptide
Specificity:	Human ASPH
Predicted Reactivity:	Percent identity by BLAST analysis: Human (100%) Mouse (85%).
Purification:	Immunoaffinity purified

Target Details

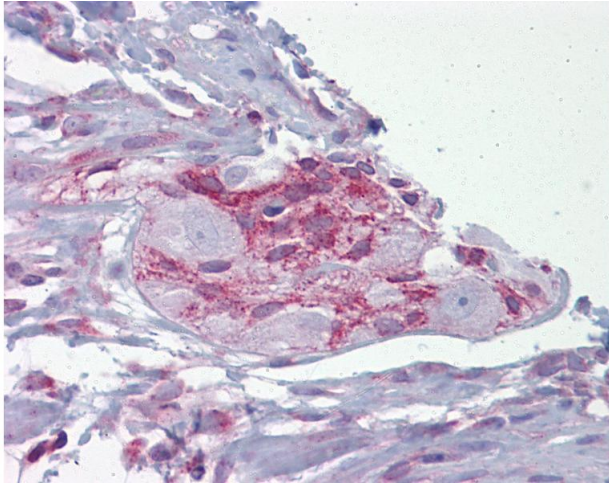
Target:	Aspartate beta Hydroxylase (ASPH)
Alternative Name:	Junctin / ASPH (ASPH Products)
Background:	Name/Gene ID: ASPH Synonyms: ASPH, A beta H-J-J, AAH, ASP beta-hydroxylase, BAH, Aspartate beta-hydroxylase, CASQ2BP1, Cardiac junctin, HAAH, Humbug, JCTN, Junctate, Junctin
Gene ID:	444
NCBI Accession:	NP_115857
UniProt:	Q12797
Pathways:	Positive Regulation of Endopeptidase Activity

Application Details

Application Notes:	Approved: IHC, IHC-P (5 µg/mL), WB (0.2 - 1 µg/mL) Usage: Western Blot: Suggested dilution at 1 µg/mL in 5 % skim milk / PBS buffer, and HRP conjugated anti-Rabbit IgG should be diluted in 1: 50,000 - 100,000 as secondary antibody.
Comment:	Target Species of Antibody: Human
Restrictions:	For Research Use only

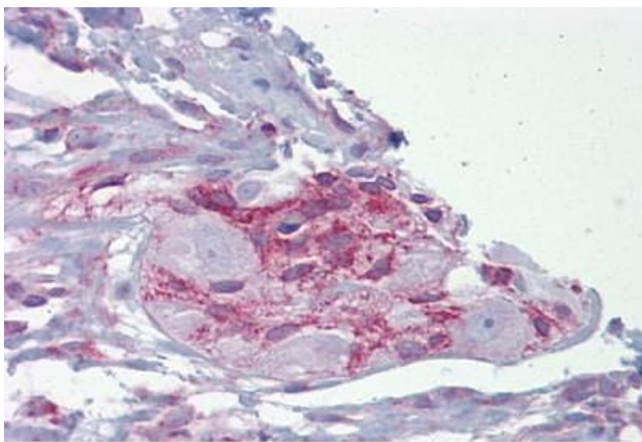
Handling

Format:	Lyophilized
Reconstitution:	Distilled water
Concentration:	Lot specific
Buffer:	Lyophilized from PBS with 2 % sucrose
Handling Advice:	Avoid repeat freeze-thaw cycles.
Storage:	4 °C,-20 °C
Storage Comment:	Long term: -20°C, the use of 50% glycerol is recommended if storing aliquots in -20°C for long term use (up to 1 year) Short term (less than 1 week): 4°C. Avoid freeze-thaw cycles.



Immunohistochemistry

Image 1. Anti-ASPH antibody IHC of human small intestine and myenteric plexus. Immunohistochemistry of formalin-fixed, paraffin-embedded tissue after heat-induced antigen retrieval. Antibody concentration 5 ug/ml. This image was taken for the unconjugated fo ...



Immunohistochemistry

Image 2. Anti-ASPH antibody IHC staining of human small intestine and myenteric plexus. Immunohistochemistry of formalin-fixed, paraffin-embedded tissue after heat-induced antigen retrieval. Antibody ABIN958957 concentration 5 ug/ml.