

Datasheet for ABIN6748500 anti-KCNMA1 antibody (AA 1080-1129)



[Go to Product page](#)

2 Images

Overview

Quantity:	100 µL
Target:	KCNMA1
Binding Specificity:	AA 1080-1129
Reactivity:	Human, Rat, Mouse, Cow, Rabbit, Horse, Guinea Pig, Sheep, Chicken, Xenopus laevis, Monkey, Pig, Bat
Host:	Rabbit
Clonality:	Polyclonal
Conjugate:	This KCNMA1 antibody is un-conjugated
Application:	Western Blotting (WB), Immunohistochemistry (IHC), Immunohistochemistry (Paraffin-embedded Sections) (IHC (p))

Product Details

Brand:	IHC-plus™
Immunogen:	Synthetic peptide located between aa1080-1129 of human KCNMA1 (Q12791, NP_001014797). Percent identity by BLAST analysis: Human, Chimpanzee, Gorilla, Gibbon, Monkey, Galago, Marmoset, Mouse, Rat, Sheep, Elephant, Bovine, Bat, Rabbit, Horse, Pig, Opossum, Guinea pig, Turkey, Zebra finch, Chicken, Platypus, Xenopus (100%), Dog, Seabass, Zebrafish (92%). Type of Immunogen: Synthetic peptide
Specificity:	Human KCNMA1
Predicted Reactivity:	Percent identity by BLAST analysis: Human, Mouse, Rat, Sheep, Bovine, Rabbit, Horse, Pig,

Product Details

Guinea pig, Chicken (100%) Zebrafish (92%).

Purification: Immunoaffinity purified

Target Details

Target: KCNMA1

Alternative Name: KCNMA1 / BK ([KCNMA1 Products](#))

Background: Name/Gene ID: KCNMA1
Subfamily: Potassium channel - calcium-activated
Family: Ion Channel

Synonyms: KCNMA1, BA205K10.1, BKCA alpha subunit, BK channel, BKCA alpha, BKTm, HSlo, K(VCA)alpha, KCa1.1, Maxi-K channel HSLO, MaxiK, KCNMA, SAKCA, SLO-ALPHA, Slowpoke homolog, Stretch-activated Kca channel, Slo homolog, BK channel alpha subunit, Maxi K channel, MSlo, MSLO1, SLO, SLO1

Gene ID: 3778

NCBI Accession: [NP_001014797](#)

UniProt: [Q12791](#)

Pathways: [Regulation of Hormone Metabolic Process](#), [Sensory Perception of Sound](#)

Application Details

Application Notes: Approved: IHC, IHC-P (5 µg/mL), WB (0.2 - 1 µg/mL)

Usage: Western Blot: Suggested dilution at 1 µg/mL in 5 % skim milk / PBS buffer, and HRP conjugated anti-Rabbit IgG should be diluted in 1: 50,000 - 100,000 as secondary antibody.

Comment: Target Species of Antibody: Human

Restrictions: For Research Use only

Handling

Format: Lyophilized

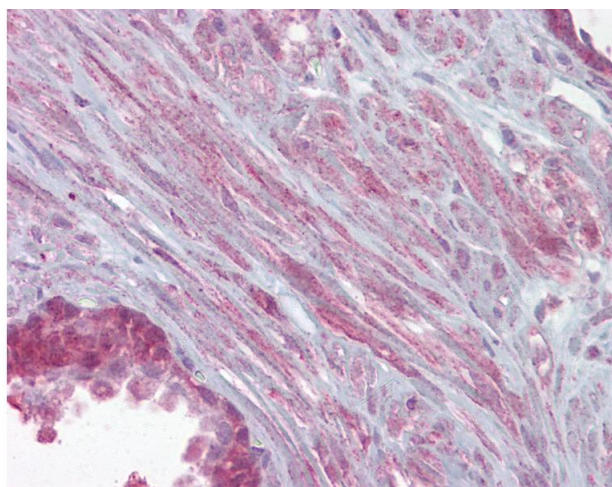
Reconstitution: Reconstitute with 50 µL sterile ddH₂O.

Concentration: Lot specific

Handling

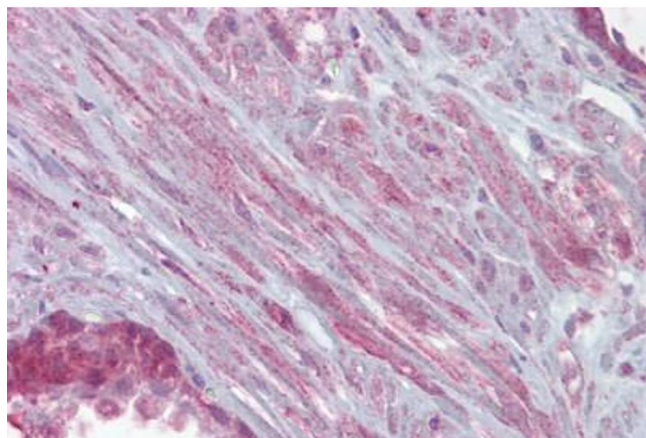
Buffer:	Lyophilized from PBS with 2 % sucrose
Handling Advice:	Avoid repeat freeze-thaw cycles.
Storage:	4 °C, -20 °C
Storage Comment:	Long term: -20°C, the use of 50% glycerol is recommended if storing aliquots in -20°C for long term use (up to 1 year) Short term (less than 1 week): 4°C. Avoid freeze-thaw cycles.

Images



Immunohistochemistry

Image 1. Anti-KCNMA1 antibody IHC of human prostate. Immunohistochemistry of formalin-fixed, paraffin-embedded tissue after heat-induced antigen retrieval. Antibody concentration 5 ug/ml. This image was taken for the unconjugated form of this product. Other ...



Immunohistochemistry

Image 2. Anti-KCNMA1 antibody IHC staining of human prostate. Immunohistochemistry of formalin-fixed, paraffin-embedded tissue after heat-induced antigen retrieval. Antibody ABIN958995 concentration 5 ug/ml.