



[Go to Product page](#)

Datasheet for ABIN6748502  
**anti-GABRB3 antibody (AA 180-229)**

2 Images

Overview

Quantity:	100 µL
Target:	GABRB3
Binding Specificity:	AA 180-229
Reactivity:	Human, Mouse, Rat, Cow, Dog, Horse, Guinea Pig, Rabbit, Zebrafish (Danio rerio), Monkey
Host:	Rabbit
Clonality:	Polyclonal
Conjugate:	This GABRB3 antibody is un-conjugated
Application:	Western Blotting (WB), Immunohistochemistry (IHC), Immunohistochemistry (Paraffin-embedded Sections) (IHC (p))

Product Details

Brand:	IHC-plus™
Immunogen:	Synthetic peptide located between aa180-229 of human GABRB3 (P28472, NP_068712). Percent identity by BLAST analysis: Human, Chimpanzee, Gorilla, Orangutan, Gibbon, Monkey, Galago, Marmoset, Mouse, Rat, Elephant, Dog, Cat, Bovine, Rabbit, Horse, Guinea pig (100%), Bat, Opossum, Turkey, Zebra finch, Chicken, Platypus, Lizard, Xenopus (92%), Frog, Zebrafish (85%).  Type of Immunogen: Synthetic peptide
Specificity:	Human GABRB3
Predicted Reactivity:	Percent identity by BLAST analysis: Human, Mouse, Rat, Dog, Bovine, Rabbit, Horse, Guinea pig

## Product Details

---

(100%) Chicken (92%).

Purification: Immunoaffinity purified

## Target Details

---

Target: GABRB3

Alternative Name: GABRB3 ([GABRB3 Products](#))

Background: Name/Gene ID: GABRB3  
Subfamily: GABA A receptor  
Family: Ion Channel

Synonyms: GABRB3, Cleft palate 1, Cp1, GABAA receptor beta-3 subunit, GABA(A) receptor, beta 3, ECA5, GABA A receptor beta 3

Gene ID: 2562

NCBI Accession: [NP\\_068712](#)

UniProt: [P28472](#)

Pathways: [Sensory Perception of Sound](#)

## Application Details

---

Application Notes: Approved: IHC, IHC-P (5 µg/mL), WB (0.2 - 1 µg/mL)

Usage: Western Blot: Suggested dilution at 1 µg/mL in 5 % skim milk / PBS buffer, and HRP conjugated anti-Rabbit IgG should be diluted in 1: 50,000 - 100,000 as secondary antibody.

Comment: Target Species of Antibody: Human

Restrictions: For Research Use only

## Handling

---

Format: Lyophilized

Reconstitution: Distilled water

Concentration: Lot specific

Buffer: Lyophilized from PBS with 2 % sucrose

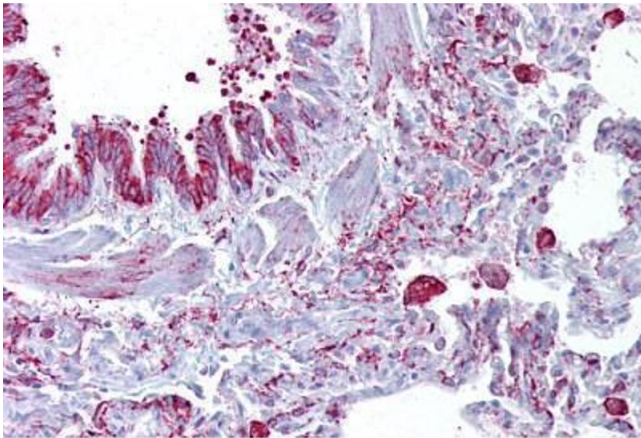
## Handling

Handling Advice: Avoid repeat freeze-thaw cycles.

Storage: 4 °C,-20 °C

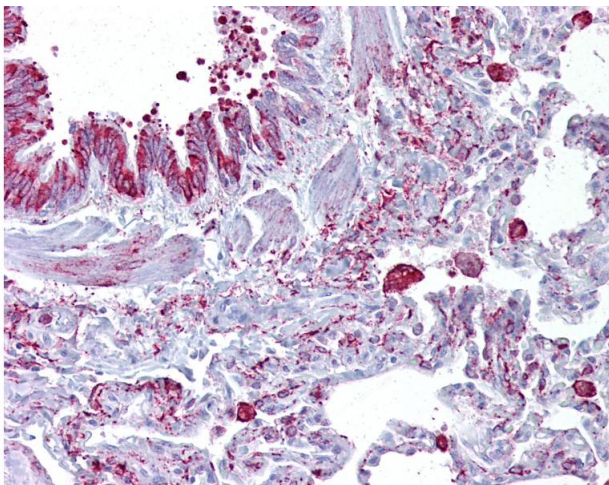
Storage Comment: Long term: -20°C, the use of 50% glycerol is recommended if storing aliquots in -20°C for long term use (up to 1 year)  
Short term (less than 1 week): 4°C. Avoid freeze-thaw cycles.

## Images



### Immunohistochemistry

**Image 1.** Anti-GABRB3 antibody IHC staining of human lung. Immunohistochemistry of formalin-fixed, paraffin-embedded tissue after heat-induced antigen retrieval. Antibody ABIN958986 concentration 5 ug/ml.



### Immunohistochemistry

**Image 2.** Anti-GABRB3 antibody IHC of human lung. Immunohistochemistry of formalin-fixed, paraffin-embedded tissue after heat-induced antigen retrieval. Antibody concentration 5 ug/ml. This image was taken for the unconjugated form of this product. Other form ...