

Datasheet for ABIN6748505  
**anti-KCNQ2 antibody (AA 179-228)**[Go to Product page](#)

## 2 Images

## Overview

Quantity:	100 µL
Target:	KCNQ2
Binding Specificity:	AA 179-228
Reactivity:	Human, Rat, Mouse, Dog, Cow, Guinea Pig, Horse, Bat, Chicken, Monkey
Host:	Rabbit
Clonality:	Polyclonal
Conjugate:	This KCNQ2 antibody is un-conjugated
Application:	Western Blotting (WB), Immunohistochemistry (IHC), Immunohistochemistry (Paraffin-embedded Sections) (IHC (p))

## Product Details

Brand:	IHC-plus™
Immunogen:	Synthetic peptide located between aa179-228 of human KCNQ2 (Q53Y30, NP_742107). Percent identity by BLAST analysis: Human, Chimpanzee, Gorilla, Monkey, Galago, Marmoset, Mouse, Rat, Elephant, Panda, Dog, Bovine, Bat, Horse, Opossum, Guinea pig, Turkey, Zebra finch, Chicken, Platypus, Lizard (100%), Gibbon, Rabbit, Pig, Armadillo, Zebrafish (92%), Xenopus, Stickleback (84%).  Type of Immunogen: Synthetic peptide
Specificity:	Human KCNQ2
Predicted Reactivity:	Percent identity by BLAST analysis: Human, Mouse, Rat, Dog, Bovine, Horse, Chicken (100%)

## Product Details

Zebrafish (92%).

Purification: Immunoaffinity purified

## Target Details

Target: KCNQ2

Alternative Name: KCNQ2 ([KCNQ2 Products](#))

Background: Name/Gene ID: KCNQ2  
Subfamily: Potassium channel - KCNQ  
Family: Ion Channel

Synonyms: KCNQ2, BFNS1, BFNC, EBN, EBN1, EIEE7, HNTPC, KQT2, KV7.2, KCNA11, KQT-like 2, ENB1, KVEBN1

Gene ID: 3785

NCBI Accession: [NP\\_742107](#)

UniProt: [O43526](#)

## Application Details

Application Notes: Approved: IHC, IHC-P (5 µg/mL), WB (0.2 - 1 µg/mL)

Usage: Western Blot: Suggested dilution at 1 µg/mL in 5 % skim milk / PBS buffer, and HRP conjugated anti-Rabbit IgG should be diluted in 1: 50,000 - 100,000 as secondary antibody.

Comment: Target Species of Antibody: Human

Restrictions: For Research Use only

## Handling

Format: Lyophilized

Reconstitution: Distilled water

Concentration: Lot specific

Buffer: Lyophilized from PBS with 2 % sucrose

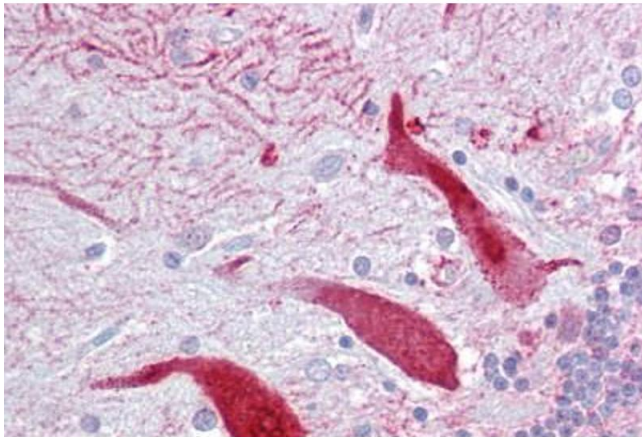
Handling Advice: Avoid repeat freeze-thaw cycles.

## Handling

Storage: 4 °C, -20 °C

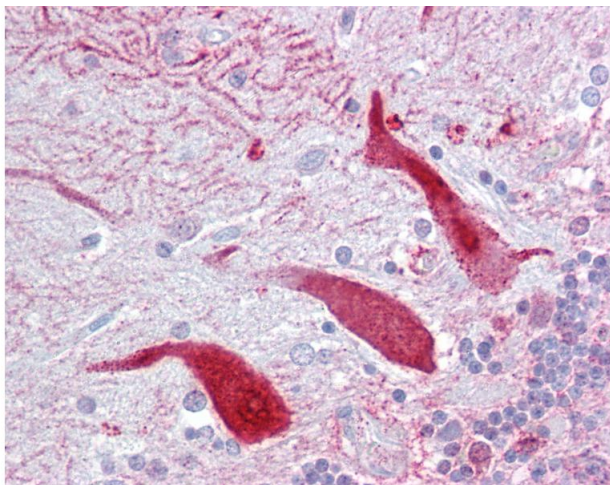
Storage Comment: Long term: -20°C, the use of 50% glycerol is recommended if storing aliquots in -20°C for long term use (up to 1 year)  
Short term (less than 1 week): 4°C. Avoid freeze-thaw cycles.

## Images



### Immunohistochemistry

**Image 1.** Anti-KCNQ2 antibody IHC staining of human brain, cerebellum. Immunohistochemistry of formalin-fixed, paraffin-embedded tissue after heat-induced antigen retrieval. Antibody ABIN958996 concentration 5 ug/ml.



### Immunohistochemistry

**Image 2.** Anti-KCNQ2 antibody IHC of human brain, cerebellum. Immunohistochemistry of formalin-fixed, paraffin-embedded tissue after heat-induced antigen retrieval. Antibody concentration 5 ug/ml. This image was taken for the unconjugated form of this product ...