

Datasheet for ABIN6748511
anti-EZH1 antibody (N-Term)



[Go to Product page](#)

2 Images

Overview

Quantity:	100 µL
Target:	EZH1
Binding Specificity:	N-Term
Reactivity:	Human, Mouse, Rat, Monkey, Cow, Guinea Pig, Horse, Dog, Rabbit, Zebrafish (Danio rerio), Chicken, Pig, Bat, Hamster
Host:	Rabbit
Clonality:	Polyclonal
Conjugate:	This EZH1 antibody is un-conjugated
Application:	Western Blotting (WB), Immunohistochemistry (IHC), Immunohistochemistry (Paraffin-embedded Sections) (IHC (p))

Product Details

Brand:	IHC-plus™
Immunogen:	Synthetic peptide from N-Terminus of human EZH1 (Q92800, NP_001982). Percent identity by BLAST analysis: Human, Chimpanzee, Gorilla, Orangutan, Monkey, Galago, Marmoset, Mouse, Rat, Hamster, Elephant, Dog, Bovine, Bat, Rabbit, Horse, Pig, Opossum, Guinea pig, Turkey, Chicken, Platypus, Lizard (100%), Medaka, Pufferfish (92%), Zebrafish (85%), Stickleback (83%). Type of Immunogen: Synthetic peptide
Specificity:	Human EZH1
Predicted Reactivity:	Percent identity by BLAST analysis: Human, Mouse, Rat, Dog, Bovine, Rabbit, Horse, Pig,

Product Details

Chicken (100%) Zebrafish (85%).

Purification: Immunoaffinity purified

Target Details

Target: EZH1

Alternative Name: EZH1 ([EZH1 Products](#))

Background: Name/Gene ID: EZH1

Synonyms: EZH1, ENX-2, KIAA0388, Enhancer of zeste homolog 1, KMT6B

Gene ID: 2145

NCBI Accession: [NP_001982](#)

UniProt: [Q92800](#)

Application Details

Application Notes: Approved: IHC, IHC-P (5 µg/mL), WB (0.2 - 1 µg/mL)

Usage: Western Blot: Suggested dilution at 1 µg/mL in 5 % skim milk / PBS buffer, and HRP conjugated anti-Rabbit IgG should be diluted in 1: 50,000 - 100,000 as secondary antibody.

Comment: Target Species of Antibody: Human

Restrictions: For Research Use only

Handling

Format: Lyophilized

Reconstitution: Distilled water

Concentration: Lot specific

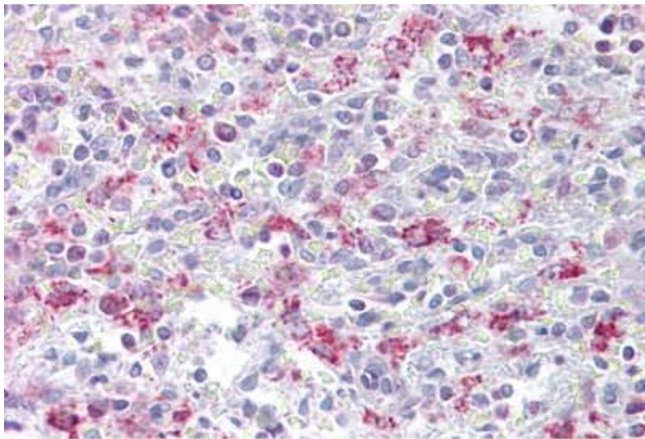
Buffer: Lyophilized from PBS with 2 % sucrose

Handling Advice: Avoid repeat freeze-thaw cycles.

Storage: 4 °C, -20 °C

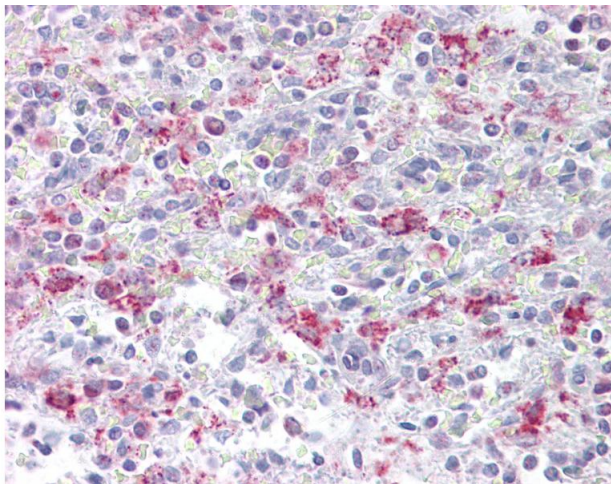
Storage Comment: Long term: -20°C, the use of 50% glycerol is recommended if storing aliquots in -20°C for long term use (up to 1 year)

Short term (less than 1 week): 4°C. Avoid freeze-thaw cycles.



Immunohistochemistry

Image 1. Anti-EZH1 antibody IHC staining of human spleen. Immunohistochemistry of formalin-fixed, paraffin-embedded tissue after heat-induced antigen retrieval. Antibody ABIN958979 concentration 5 ug/ml.



Immunohistochemistry

Image 2. Anti-EZH1 antibody IHC of human spleen. Immunohistochemistry of formalin-fixed, paraffin-embedded tissue after heat-induced antigen retrieval. Antibody concentration 5 ug/ml. This image was taken for the unconjugated form of this product. Other form ...