

Datasheet for ABIN6748513  
**anti-EGR3 antibody (AA 35-84)**[Go to Product page](#)

## 2 Images

## Overview

Quantity:	100 µL
Target:	EGR3
Binding Specificity:	AA 35-84
Reactivity:	Human, Rat, Horse, Monkey
Host:	Rabbit
Clonality:	Polyclonal
Conjugate:	This EGR3 antibody is un-conjugated
Application:	Western Blotting (WB), Immunohistochemistry (IHC), Immunohistochemistry (Paraffin-embedded Sections) (IHC (p))

## Product Details

Brand:	IHC-plus™
Immunogen:	Synthetic peptide located between aa35-84 of human EGR3 (Q06889, NP_004421). Percent identity by BLAST analysis: Human, Chimpanzee, Gibbon, Monkey, Marmoset (100%), Galago, Mouse, Panda, Dog, Bovine, Bat, Pig, Guinea pig (92%), Rat, Horse (85%).  Type of Immunogen: Synthetic peptide
Specificity:	Human EGR3
Predicted Reactivity:	Percent identity by BLAST analysis: Human (100%) Mouse, Dog, Bovine, Pig, Guinea pig (92%) Rat, Horse (85%).
Purification:	Immunoaffinity purified

## Target Details

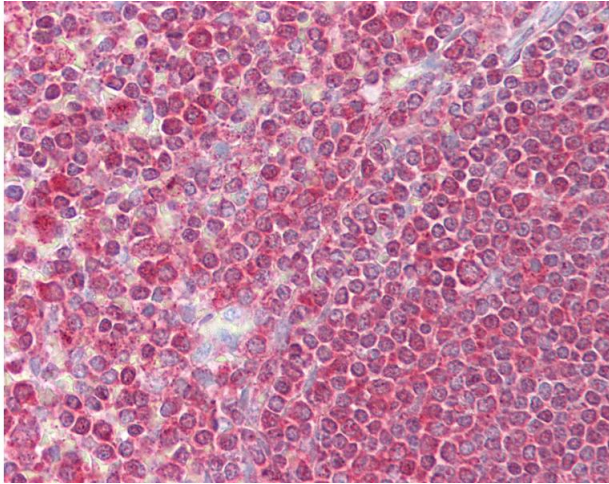
Target:	EGR3
Alternative Name:	EGR3 ( <a href="#">EGR3 Products</a> )
Background:	Name/Gene ID: EGR3  Synonyms: EGR3, Early growth response 3, EGR-3, PILOT, Zinc finger protein pilot
Gene ID:	1960
NCBI Accession:	<a href="#">NP_004421</a>
UniProt:	<a href="#">Q06889</a>

## Application Details

Application Notes:	Approved: IHC, IHC-P (5 µg/mL), WB (0.2 - 1 µg/mL)  Usage: Western Blot: Suggested dilution at 1 µg/mL in 5 % skim milk / PBS buffer, and HRP conjugated anti-Rabbit IgG should be diluted in 1: 50,000 - 100,000 as secondary antibody.
Comment:	Target Species of Antibody: Human
Restrictions:	For Research Use only

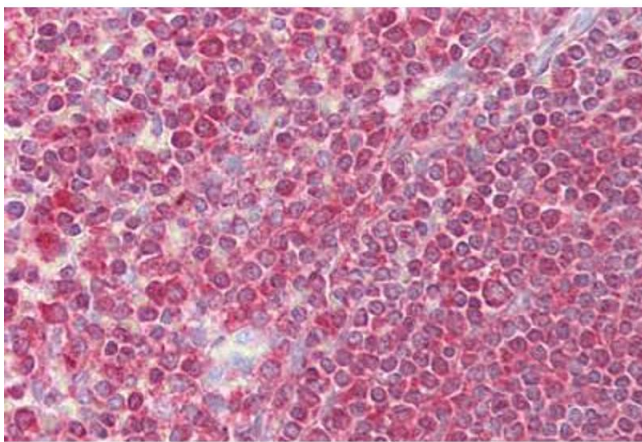
## Handling

Format:	Lyophilized
Reconstitution:	Distilled water
Concentration:	Lot specific
Buffer:	Lyophilized from PBS with 2 % sucrose
Handling Advice:	Avoid repeat freeze-thaw cycles.
Storage:	4 °C, -20 °C
Storage Comment:	Long term: -20°C, the use of 50% glycerol is recommended if storing aliquots in -20°C for long term use (up to 1 year)  Short term (less than 1 week): 4°C. Avoid freeze-thaw cycles.



#### Immunohistochemistry

**Image 1.** Anti-EGR3 antibody IHC of human spleen. Immunohistochemistry of formalin-fixed, paraffin-embedded tissue after heat-induced antigen retrieval. Antibody concentration 5 ug/ml. This image was taken for the unconjugated form of this product. Other form ...



#### Immunohistochemistry

**Image 2.** Anti-EGR3 antibody IHC staining of human spleen. Immunohistochemistry of formalin-fixed, paraffin-embedded tissue after heat-induced antigen retrieval. Antibody ABIN958974 concentration 5 ug/ml.