

Datasheet for ABIN6748516
anti-ARNTL2 antibody (AA 35-84)

2 Images

[Go to Product page](#)

Overview

Quantity:	100 µL
Target:	ARNTL2
Binding Specificity:	AA 35-84
Reactivity:	Human, Dog
Host:	Rabbit
Clonality:	Polyclonal
Conjugate:	This ARNTL2 antibody is un-conjugated
Application:	Western Blotting (WB), Immunohistochemistry (Paraffin-embedded Sections) (IHC (p)), Immunohistochemistry (IHC)

Product Details

Brand:	IHC-plus™
Immunogen:	Synthetic peptide located between aa35-84 of human ARNTL2 (Q8WYA1, NP_064568). Percent identity by BLAST analysis: Human, Chimpanzee, Gorilla (100%), Monkey, Galago (92%), Chicken, Lizard, Xenopus (90%), Gibbon, Dog (85%), Turkey (84%). Type of Immunogen: Synthetic peptide
Isotype:	IgG
Specificity:	Human ARNTL2
Predicted Reactivity:	Percent identity by BLAST analysis: Human (100%) Chicken (90%) Dog (85%).
Purification:	Immunoaffinity purified

Target Details

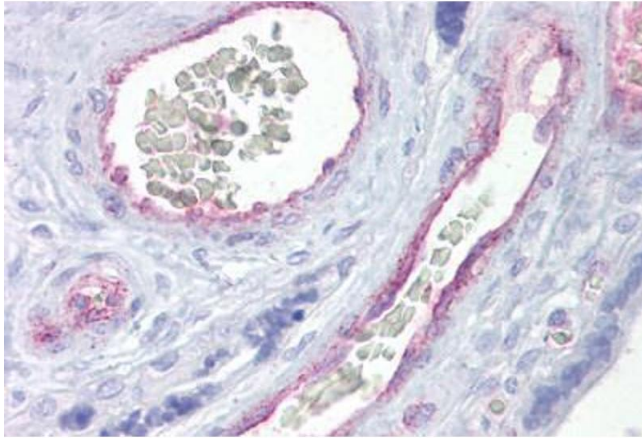
Target:	ARNTL2
Alternative Name:	BMAL2 / ARNTL2 (ARNTL2 Products)
Background:	Name/Gene ID: ARNTL2 Synonyms: ARNTL2, BHLHe6, Brain and muscle ARNT-like 2, BMAL2, CLIF, Member of PAS protein 9, MOP9, PASD9, Transcription factor BMAL2, CYCLE-like factor
Gene ID:	56938
NCBI Accession:	NP_064568
UniProt:	Q8WYA1
Pathways:	Photoperiodism

Application Details

Application Notes:	Approved: IHC, IHC-P (5 µg/mL), WB (0.2 - 1 µg/mL) Usage: Western Blot: Suggested dilution at 1 µg/mL in 5 % skim milk / PBS buffer, and HRP conjugated anti-Rabbit IgG should be diluted in 1: 50,000 - 100,000 as second antibody. ELISA titer in peptide based assay: 1:1562500.
Comment:	Target Species of Antibody: Human
Restrictions:	For Research Use only

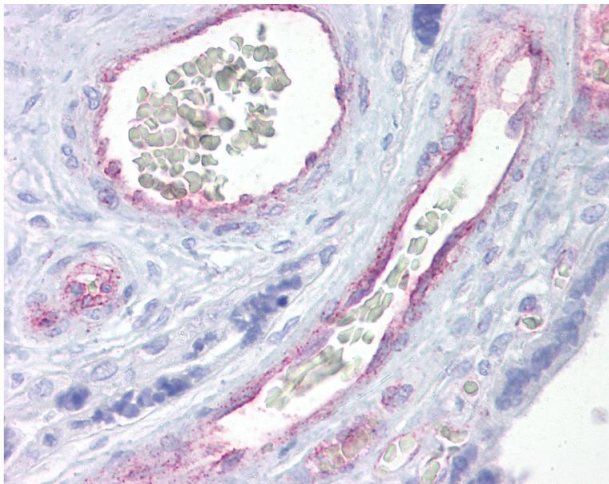
Handling

Format:	Lyophilized
Reconstitution:	Distilled water
Concentration:	Lot specific
Buffer:	Lyophilized from PBS with 2 % sucrose
Handling Advice:	Avoid repeat freeze-thaw cycles.
Storage:	4 °C, -20 °C
Storage Comment:	Long term: -20°C, the use of 50% glycerol is recommended if storing aliquots in -20°C for long term use (up to 1 year) Short term (less than 1 week): 4°C. Avoid freeze-thaw cycles.



Immunohistochemistry

Image 1. Anti-ARNTL2 antibody IHC staining of human placenta. Immunohistochemistry of formalin-fixed, paraffin-embedded tissue after heat-induced antigen retrieval. Antibody ABIN958302 concentration 5 ug/ml.



Immunohistochemistry

Image 2. Anti-ARNTL2 antibody IHC of human placenta. Immunohistochemistry of formalin-fixed, paraffin-embedded tissue after heat-induced antigen retrieval. Antibody concentration 5 ug/ml. This image was taken for the unconjugated form of this product. Other ...