

Datasheet for ABIN6748518
anti-PON1 antibody (AA 215-264)

2 Images

[Go to Product page](#)

Overview

Quantity:	100 µL
Target:	PON1
Binding Specificity:	AA 215-264
Reactivity:	Human, Rabbit, Pig
Host:	Rabbit
Clonality:	Polyclonal
Conjugate:	This PON1 antibody is un-conjugated
Application:	Western Blotting (WB), Immunohistochemistry (IHC), Immunohistochemistry (Paraffin-embedded Sections) (IHC (p))

Product Details

Brand:	IHC-plus™
Immunogen:	Synthetic peptide located between aa215-264 of human PON1 (P27169, NP_000437). Percent identity by BLAST analysis: Human, Chimpanzee, Monkey, Galago, Rabbit, Pig (100%), Gorilla, Gibbon, Marmoset, Mouse, Rat, Hamster, Dog, Bat, Horse (92%), Bovine (91%), Elephant (85%). Type of Immunogen: Synthetic peptide
Isotype:	IgG
Specificity:	Human PON1
Predicted Reactivity:	Percent identity by BLAST analysis: Human, Rabbit, Pig (100%) Mouse, Rat, Dog (92%) Bovine (91%).

Product Details

Purification: Immunoaffinity purified

Target Details

Target: PON1

Alternative Name: PON1 / ESA ([PON1 Products](#))

Background: Name/Gene ID: PON1

Synonyms: PON1, A-esterase 1, Aromatic esterase 1, Esterase A, ESA, K-45, MVCD5, Paraoxonase 1, PON 1, Serum aryldialkylphosphatase 1, Arylesterase B-type, Paraoxonase B-type, PON, Serum aryldiacylphosphatase

Gene ID: 5444

NCBI Accession: [NP_000437](#)

UniProt: [P27169](#)

Application Details

Application Notes: Approved: IHC, IHC-P (5 µg/mL), WB (0.2 - 1 µg/mL)

Usage: Western Blot: Suggested dilution at 1 µg/mL in 5 % skim milk / PBS buffer, and HRP conjugated anti-Rabbit IgG should be diluted in 1: 50,000 - 100,000 as second antibody. ELISA titer in peptide based assay: 1:1562500.

Comment: Target Species of Antibody: Human

Restrictions: For Research Use only

Handling

Format: Lyophilized

Reconstitution: Distilled water

Concentration: Lot specific

Buffer: Lyophilized from PBS with 2 % sucrose

Handling Advice: Avoid repeat freeze-thaw cycles.

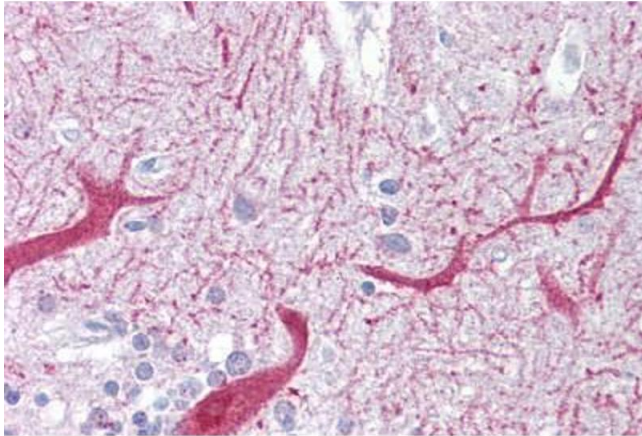
Storage: 4 °C, -20 °C

Handling

Storage Comment: Long term: -20°C, the use of 50% glycerol is recommended if storing aliquots in -20°C for long term use (up to 1 year)

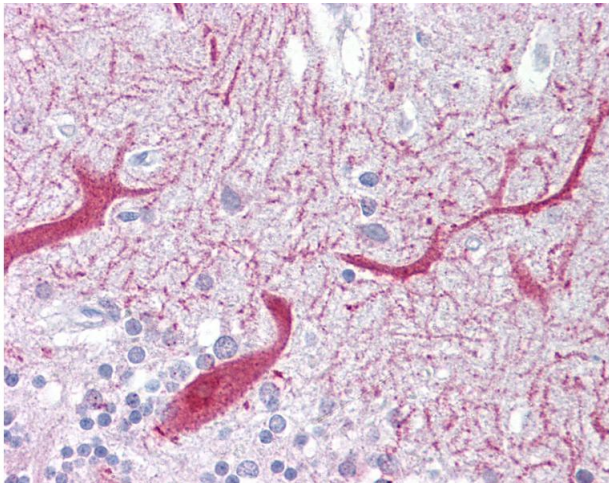
Short term (less than 1 week): 4°C. Avoid freeze-thaw cycles.

Images



Immunohistochemistry

Image 1. Anti-PON1 antibody IHC staining of human brain, cerebellum. Immunohistochemistry of formalin-fixed, paraffin-embedded tissue after heat-induced antigen retrieval. Antibody ABIN958316 concentration 5 ug/ml.



Immunohistochemistry

Image 2. Anti-PON1 antibody IHC of human brain, cerebellum. Immunohistochemistry of formalin-fixed, paraffin-embedded tissue after heat-induced antigen retrieval. Antibody concentration 5 ug/ml. This image was taken for the unconjugated form of this product. ...