

Datasheet for ABIN6748523
anti-SLC13A2 antibody (AA 360-409)

2 Images

[Go to Product page](#)

Overview

Quantity:	100 µL
Target:	SLC13A2
Binding Specificity:	AA 360-409
Reactivity:	Human, Pig, Cow, Guinea Pig, Monkey
Host:	Rabbit
Clonality:	Polyclonal
Conjugate:	This SLC13A2 antibody is un-conjugated
Application:	Western Blotting (WB), Immunohistochemistry (IHC), Immunohistochemistry (Paraffin-embedded Sections) (IHC (p))

Product Details

Brand:	IHC-plus™
Immunogen:	Synthetic peptide located between aa360-409 of human SLC13A2 (Q13183, NP_003975). Percent identity by BLAST analysis: Human, Gorilla, Gibbon, Marmoset (100%), Elephant (92%), Rabbit (84%), Bat (83%). Type of Immunogen: Synthetic peptide
Isotype:	IgG
Specificity:	Human SLC13A2
Predicted Reactivity:	Percent identity by BLAST analysis: Human (100%).
Purification:	Immunoaffinity purified

Target Details

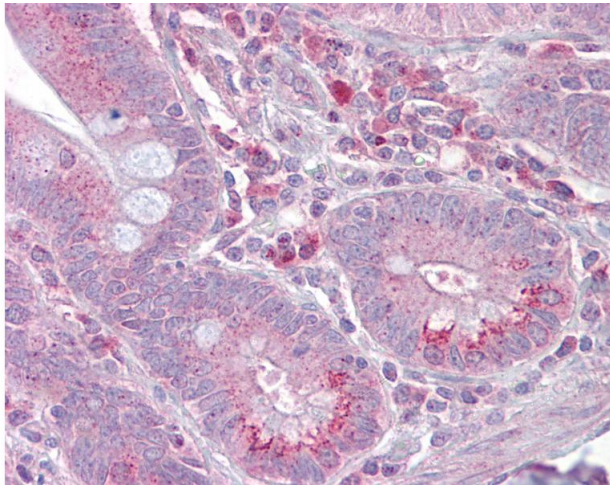
Target:	SLC13A2
Alternative Name:	SLC13A2 / NaCT (SLC13A2 Products)
Background:	Name/Gene ID: SLC13A2 Subfamily: Sodium:sulfate symporter Family: Transporter Synonyms: SLC13A2, NACT, NaDC-1, NADC1, SDCT1, HNaDC-1
Gene ID:	9058
NCBI Accession:	NP_003975
UniProt:	Q13183

Application Details

Application Notes:	Approved: IHC, IHC-P (5 µg/mL), WB (0.2 - 1 µg/mL) Usage: Western Blot: Suggested dilution at 1 µg/mL in 5 % skim milk / PBS buffer, and HRP conjugated anti-Rabbit IgG should be diluted in 1: 50,000 - 100,000 as second antibody. ELISA titer in peptide based assay: 1:1562500.
Comment:	Target Species of Antibody: Human
Restrictions:	For Research Use only

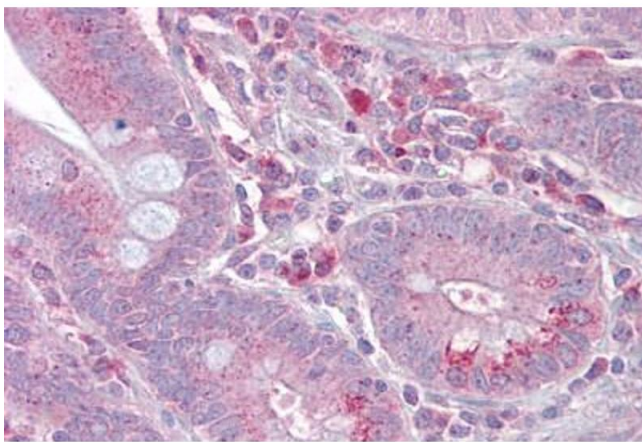
Handling

Format:	Lyophilized
Reconstitution:	Distilled water
Concentration:	Lot specific
Buffer:	Lyophilized from PBS with 2 % sucrose
Handling Advice:	Avoid repeat freeze-thaw cycles.
Storage:	4 °C, -20 °C
Storage Comment:	Long term: -20°C, the use of 50% glycerol is recommended if storing aliquots in -20°C for long term use (up to 1 year) Short term (less than 1 week): 4°C. Avoid freeze-thaw cycles.



Immunohistochemistry

Image 1. Anti-SLC13A2 antibody IHC of human small intestine. Immunohistochemistry of formalin-fixed, paraffin-embedded tissue after heat-induced antigen retrieval. Antibody concentration 5 ug/ml. This image was taken for the unconjugated form of this product ...



Immunohistochemistry

Image 2. Anti-SLC13A2 antibody IHC staining of human small intestine. Immunohistochemistry of formalin-fixed, paraffin-embedded tissue after heat-induced antigen retrieval. Antibody ABIN958323 concentration 5 ug/ml.