

Datasheet for ABIN6748524
anti-MST1 antibody (AA 540-589)[Go to Product page](#)

2 Images

Overview

Quantity:	100 µL
Target:	MST1
Binding Specificity:	AA 540-589
Reactivity:	Human, Dog, Pig
Host:	Rabbit
Clonality:	Polyclonal
Conjugate:	This MST1 antibody is un-conjugated
Application:	Western Blotting (WB), Immunohistochemistry (IHC), Immunohistochemistry (Paraffin-embedded Sections) (IHC (p))

Product Details

Brand:	IHC-plus™
Immunogen:	Synthetic peptide located between aa540-589 of human MST1 (P26927, NP_066278). Percent identity by BLAST analysis: Human (100%), Gorilla, Gibbon, Monkey (92%), Pig (85%), Marmoset, Dog, Horse (84%). Type of Immunogen: Synthetic peptide
Isotype:	IgG
Specificity:	Human MST1
Predicted Reactivity:	Percent identity by BLAST analysis: Human (100%) Pig (85%) Dog (84%).
Purification:	Immunoaffinity purified

Target Details

Target:	MST1
Alternative Name:	MST1 (MST1 Products)
Background:	Name/Gene ID: MST1 Subfamily: Serine S1 Family: Protease Synonyms: MST1, DNF15S2, D3F15S2, Macrophage-stimulating protein, MSP, Macrophage stimulating 1, Macrophage stimulatory protein, NF15S2, HGFL
Gene ID:	4485
NCBI Accession:	NP_066278
UniProt:	P26927

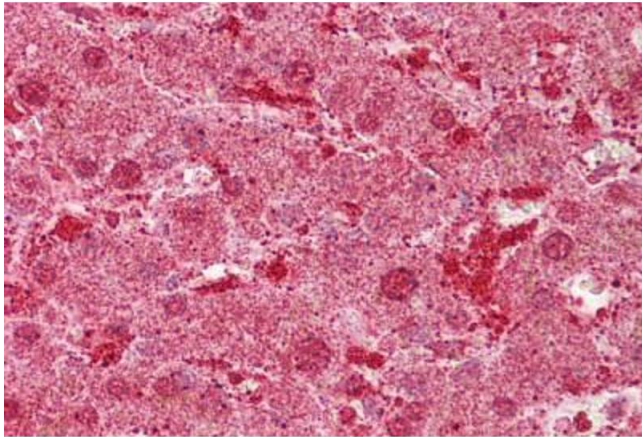
Application Details

Application Notes:	Approved: IHC, IHC-P (5 µg/mL), WB (0.2 - 1 µg/mL) Usage: Western Blot: Suggested dilution at 1 µg/mL in 5 % skim milk / PBS buffer, and HRP conjugated anti-Rabbit IgG should be diluted in 1: 50,000 - 100,000 as second antibody. ELISA titer in peptide based assay: 1:312500.
Comment:	Target Species of Antibody: Human
Restrictions:	For Research Use only

Handling

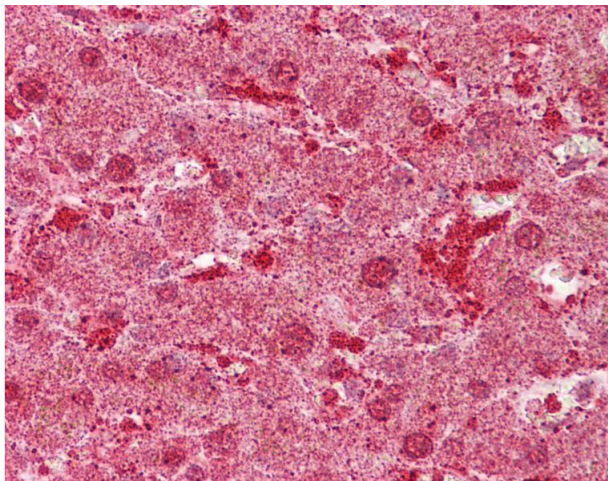
Format:	Lyophilized
Reconstitution:	Distilled water
Concentration:	Lot specific
Buffer:	Lyophilized from PBS with 2 % sucrose
Handling Advice:	Avoid repeat freeze-thaw cycles.
Storage:	4 °C, -20 °C
Storage Comment:	Long term: -20°C, the use of 50% glycerol is recommended if storing aliquots in -20°C for long term use (up to 1 year)

Short term (less than 1 week): 4°C. Avoid freeze-thaw cycles.



Immunohistochemistry

Image 1. Anti-MST1 antibody IHC staining of human liver. Immunohistochemistry of formalin-fixed, paraffin-embedded tissue after heat-induced antigen retrieval. Antibody ABIN958312 concentration 5 ug/ml.



Immunohistochemistry

Image 2. Anti-MST1 antibody IHC of human liver. Immunohistochemistry of formalin-fixed, paraffin-embedded tissue after heat-induced antigen retrieval. Antibody concentration 5 ug/ml. This image was taken for the unconjugated form of this product. Other forms ...