



[Go to Product page](#)

Datasheet for ABIN6748525
anti-KRT23 antibody (C-Term)

2 Images

Overview

Quantity:	100 µL
Target:	KRT23
Binding Specificity:	C-Term
Reactivity:	Human, Horse
Host:	Rabbit
Clonality:	Polyclonal
Conjugate:	This KRT23 antibody is un-conjugated
Application:	Western Blotting (WB), Immunohistochemistry (IHC), Immunohistochemistry (Paraffin-embedded Sections) (IHC (p))

Product Details

Brand:	IHC-plus™
Immunogen:	Synthetic peptide from C-Terminus of human KRT23 (Q9C075, NP_056330). Percent identity by BLAST analysis: Human, Chimpanzee, Gorilla (100%), Monkey, Marmoset, Dog (92%), Galago, Horse (85%). Type of Immunogen: Synthetic peptide
Isotype:	IgG
Specificity:	Human KRT23 / Cytokeratin 23
Predicted Reactivity:	Percent identity by BLAST analysis: Human (100%) Dog (92%) Horse (85%).
Purification:	Immunoaffinity purified

Target Details

Target: KRT23

Alternative Name: KRT23 / Keratin 23 ([KRT23 Products](#))

Background: Name/Gene ID: KRT23

Synonyms: KRT23, CK-23, CK23, Cytokeratin 23, Cytokeratin-23, HAIK1, Keratin-23, DKFZP434G032, K23

Gene ID: 25984

NCBI Accession: [NP_056330](#)

Application Details

Application Notes: Approved: IHC, IHC-P (5 µg/mL), WB (0.2 - 1 µg/mL)

Usage: Western Blot: Suggested dilution at 1 µg/mL in 5 % skim milk / PBS buffer, and HRP conjugated anti-Rabbit IgG should be diluted in 1: 50,000 - 100,000 as second antibody. ELISA titer in peptide based assay: 1:62500.

Comment: Target Species of Antibody: Human

Restrictions: For Research Use only

Handling

Format: Lyophilized

Reconstitution: Distilled water

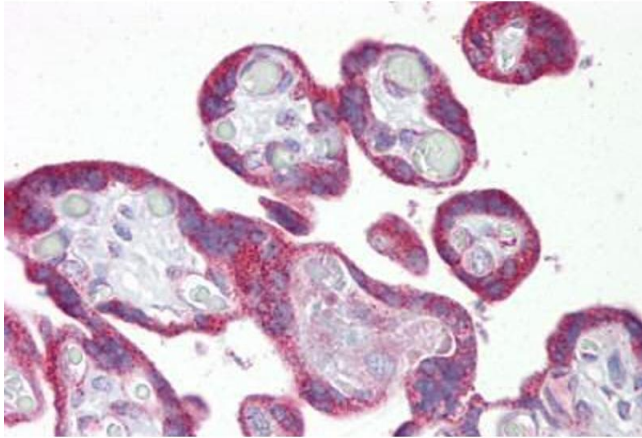
Concentration: Lot specific

Buffer: Lyophilized from PBS with 2 % sucrose

Storage: 4 °C, -20 °C

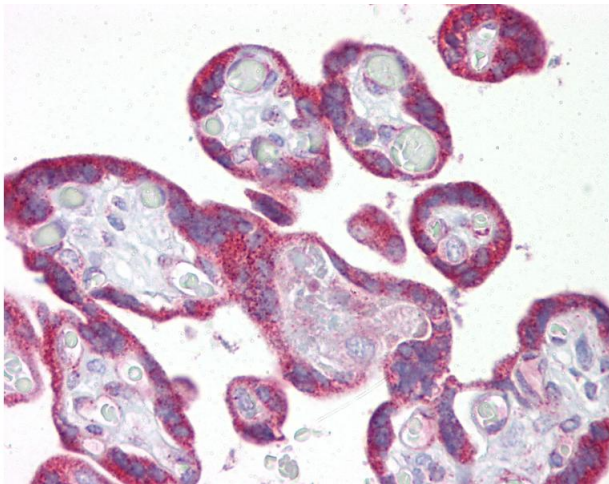
Storage Comment: Long term: -20°C, the use of 50% glycerol is recommended if storing aliquots in -20°C for long term use (up to 1 year)

Short term (less than 1 week): 4°C. Avoid freeze-thaw cycles.



Immunohistochemistry

Image 1. Anti-KRT23 / Cytokeratin 23 antibody IHC staining of human placenta. Immunohistochemistry of formalin-fixed, paraffin-embedded tissue after heat-induced antigen retrieval. Antibody ABIN958311 concentration 5 ug/ml.



Immunohistochemistry

Image 2. Anti-KRT23 / Cytokeratin 23 antibody IHC of human placenta. Immunohistochemistry of formalin-fixed, paraffin-embedded tissue after heat-induced antigen retrieval. Antibody concentration 5 ug/ml. This image was taken for the unconjugated form of this ...