

Datasheet for ABIN6748529  
**anti-RP2 antibody (C-Term)**[Go to Product page](#)

## 2 Images

## Overview

Quantity:	100 µL
Target:	RP2
Binding Specificity:	C-Term
Reactivity:	Human, Mouse, Rat, Dog, Rabbit, Hamster
Host:	Rabbit
Clonality:	Polyclonal
Conjugate:	This RP2 antibody is un-conjugated
Application:	Western Blotting (WB), Immunohistochemistry (IHC), Immunohistochemistry (Paraffin-embedded Sections) (IHC (p))

## Product Details

Brand:	IHC-plus™
Immunogen:	Synthetic peptide from C-Terminus of human RP2 (075695, NP_008846). Percent identity by BLAST analysis: Human, Monkey, Mouse, Rat, Hamster, Panda, Dog (100%), Marmoset, Elephant, Bovine, Horse, Guinea pig (92%), Rabbit (85%).  Type of Immunogen: Synthetic peptide
Isotype:	IgG
Specificity:	Human RP2
Predicted Reactivity:	Percent identity by BLAST analysis: Human, Mouse, Dog (100%) Bovine, Horse (92%) Rabbit (85%).

## Product Details

Purification: Immunoaffinity purified

## Target Details

Target: RP2

Alternative Name: RP2 ([RP2 Products](#))

Background: Name/Gene ID: RP2

Synonyms: RP2, XRP2, DELXp11.3, NM23-H10, NME10, Protein XRP2, TBCCD2

Gene ID: 6102

NCBI Accession: [NP\\_008846](#)

UniProt: [O75695](#)

Pathways: [Nucleotide Phosphorylation](#), [Ribonucleoside Biosynthetic Process](#)

## Application Details

Application Notes: Approved: IHC, IHC-P (5 µg/mL), WB (0.2 - 1 µg/mL)

Usage: Western Blot: Suggested dilution at 1 µg/mL in 5 % skim milk / PBS buffer, and HRP conjugated anti-Rabbit IgG should be diluted in 1: 50,000 - 100,000 as second antibody. ELISA titer in peptide based assay: 1:1562500.

Comment: Target Species of Antibody: Human

Restrictions: For Research Use only

## Handling

Format: Lyophilized

Reconstitution: Distilled water

Concentration: Lot specific

Buffer: Lyophilized from PBS with 2 % sucrose

Handling Advice: Avoid repeat freeze-thaw cycles.

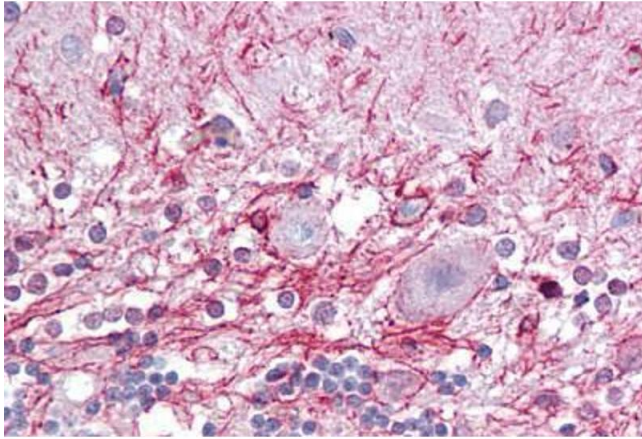
Storage: 4 °C, -20 °C

Storage Comment: Long term: -20°C, the use of 50% glycerol is recommended if storing aliquots in -20°C for long

term use (up to 1 year)

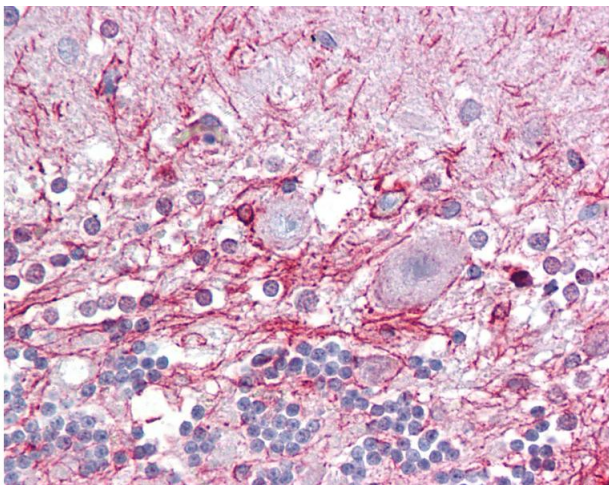
Short term (less than 1 week): 4°C. Avoid freeze-thaw cycles.

## Images



### Immunohistochemistry

**Image 1.** Anti-RP2 antibody IHC staining of human brain, cerebellum. Immunohistochemistry of formalin-fixed, paraffin-embedded tissue after heat-induced antigen retrieval. Antibody ABIN958321 concentration 5 ug/ml.



### Immunohistochemistry

**Image 2.** Anti-RP2 antibody IHC of human brain, cerebellum. Immunohistochemistry of formalin-fixed, paraffin-embedded tissue after heat-induced antigen retrieval. Antibody concentration 5 ug/ml. This image was taken for the unconjugated form of this product. ...